

DENVER, COLORADO

AL-9077 (FAA)

LOC/DME I-DXU 111.9 Chan 56	APP CRS 350°	Rwy Idg TDZE Apt Elev	16000 5324 5431
---	------------------------	-----------------------------	--

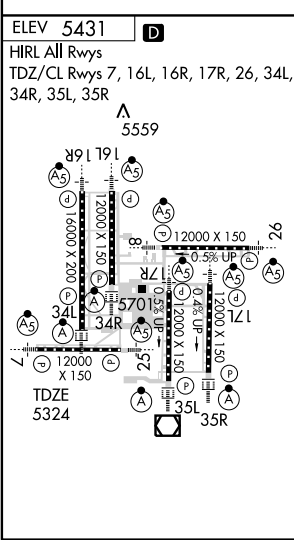
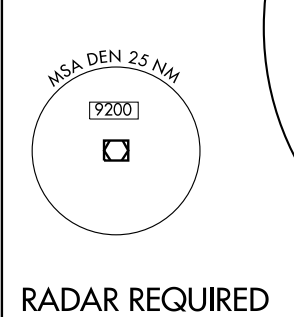
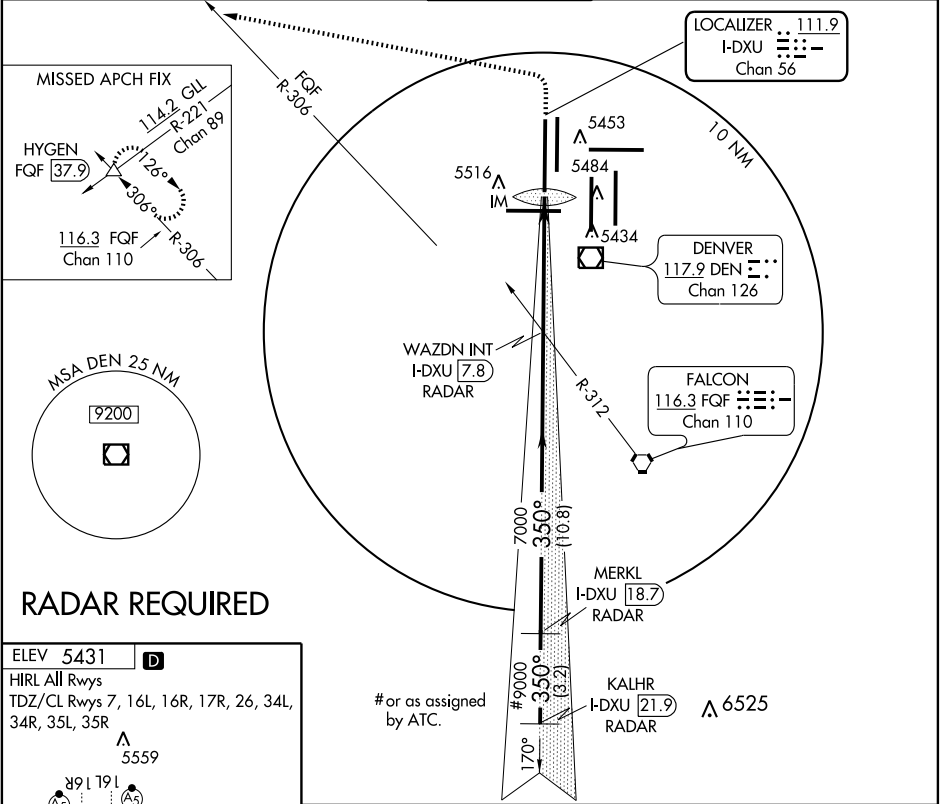
ILS RWY 34L (CAT II)

DENVER INTL (DEN)

⚠ Simultaneous approaches authorized with Rwy 35L and 35R.

ALSf-2 MISSED APPROACH: Climb to 5800, then climbing left turn to 12000 via 270° heading and FQF VORTAC R-306 to HYGEN INT/FQF 37.9 DME and hold.

ATIS 125.6 379.9	DENVER APP CON 119.3 307.3 (NORTH)	DENVER TOWER 135.3 351.95	GND CON 127.5 379.175	CLNC DEL 118.75
----------------------------	---	-------------------------------------	---------------------------------	---------------------------



5800	12000	FQF R-306 116.3	HYGEN	# or as assigned by ATC % 7000 when assigned by ATC	KALHR I-DXU 21.9 RADAR
5324 MSL		1090 93°		10000#	
		4.9 NM		9000#	
		10.8 NM		8000#	
		3.2 NM		GS 3.00° TCH 55'	
CATEGORY	A	B	C	D	
S-ILS 34L	5424/12 100 RA 107				
CATEGORY II ILS - SPECIAL AIRCREW & AIRCRAFT CERTIFICATION REQUIRED					

SW-1, 19 NOV 2009 to 17 DEC 2009

SW-1, 19 NOV 2009 to 17 DEC 2009

DENVER, COLORADO
Orig-A 09127

39°52'N-104°40'W

DENVER INTL (DEN)
ILS RWY 34L (CAT II)