

DENVER, COLORADO

AL-9077 (FAA)

LOC/DME I-DPP 110.15 Chan 38(Y)	APP CRS 350°	Rwy ldg 12000 TDZE 5367 Apt Elev 5431
---	------------------------	--

ILS RWY 35R

DENVER INTL (DEN)

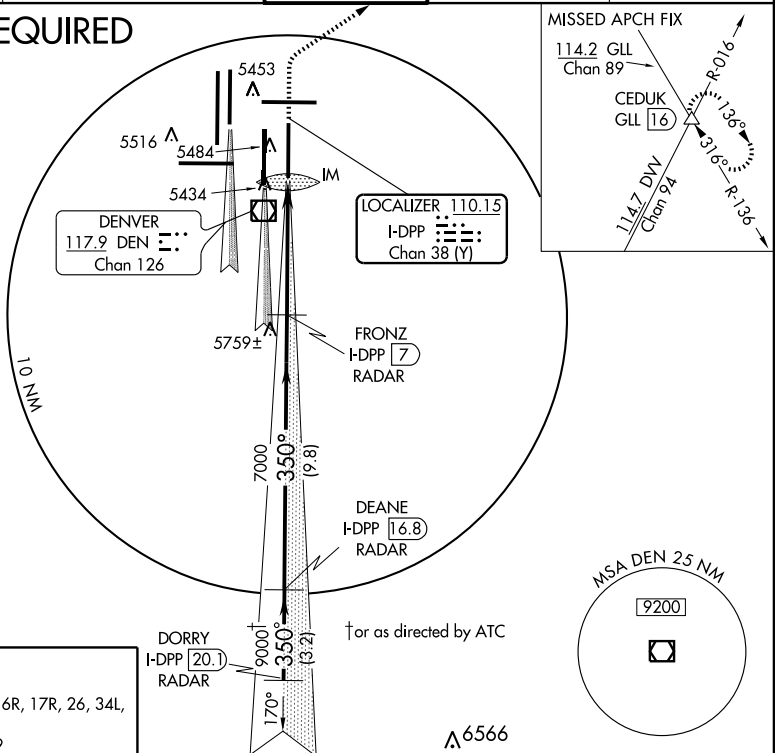
▼ *DME or RADAR required.
 Simultaneous approaches authorized with Rwy 34R and Rwy 35L.
 S-LOC minima not authorized during simultaneous operations.

ALSF-2

MISSED APPROACH: Climb to 5800, then climbing right turn to 10000 via 045° heading and GLL VORTAC R-136 to CEDUK INT/ GLL 16 DME and hold.

ATIS 125.6 379.9	DENVER APP CON 119.3 307.3 120.35 379.3 (NORTH) (SOUTH)	DENVER TOWER 124.3 256.85	GND CON 121.85 377.1	CLNC DEL 118.75
----------------------------	--	-------------------------------------	--------------------------------	---------------------------

RADAR REQUIRED



SW-1, 19 NOV 2009 to 17 DEC 2009

SW-1, 19 NOV 2009 to 17 DEC 2009

ELEV 5431 **D**

HIRL all Rwys
 TDZ/CL Rwys 7, 16L, 16R, 17R, 26, 34L, 34R, 35L, 35R

350° 4.9 NM from FAF

Knots	60	90	120	150	180
Min:Sec	4:54	3:16	2:27	1:58	1:38

↑ as directed by ATC

5800	10000	GLL R-136 114.2	CEDUK	↑ as directed by ATC	DEANE I-DPP 16.8 RADAR	DORRY I-DPP 20.1 RADAR
------	-------	-----------------	-------	----------------------	------------------------	------------------------

CATEGORY	A	B	C	D
S-ILS 35R	5567/18 200 (200-½)			
S-LOC 35R*	5940/24	573 (600-½)	5940/50 573 (600-1)	5940/60 573 (600-1¼)
CIRCLING	NA			

GS 3.00° TCH 59'

DENVER, COLORADO
 Amdt 1B 09127

39°52'N-104°40'W

DENVER INTL (DEN)

ILS RWY 35R