

DENVER, COLORADO

AL-9077 (FAA)

LOC/DME I-DPP 110.15 Chan 38(Y)	APP CRS 350°	Rwy Idg 12000 TDZE 5367 Apt Elev 5431
---	------------------------	--

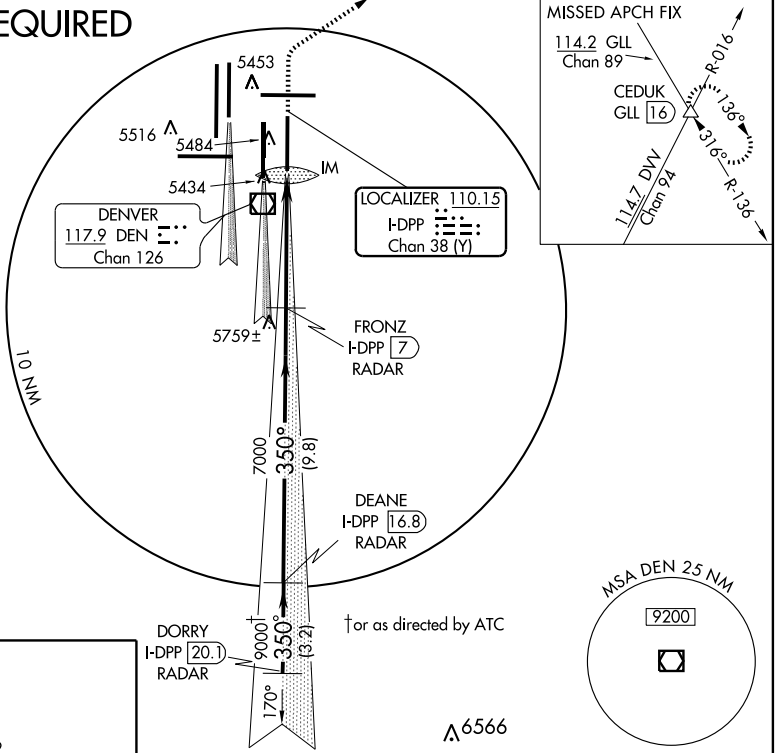
ILS RWY 35R (CAT II)

DENVER INTL (DEN)

Simultaneous approaches authorized with Rwy 34R and Rwy 35L. 	MISSED APPROACH: Climb to 5800, then climbing right turn to 10000 via 045° heading and GLL VORTAC R-136 to CEDUK INT/ GLL 16 DME and hold.	

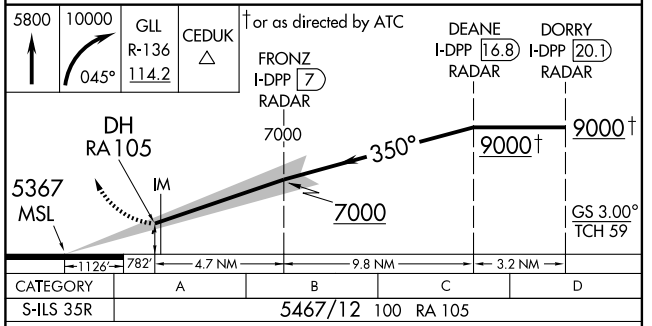
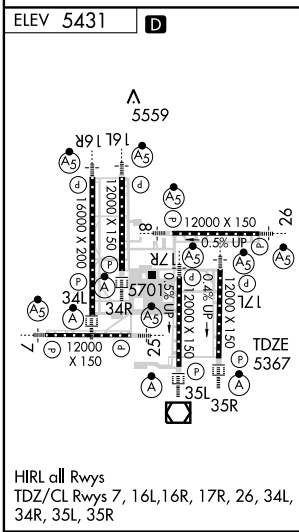
ATIS 125.6 379.9	DENVER APP CON 119.3 307.3 120.35 379.3 (NORTH) (SOUTH)	DENVER TOWER 124.3 256.85	GND CON 121.85 377.1	CLNC DEL 118.75
----------------------------	--	-------------------------------------	--------------------------------	---------------------------

RADAR REQUIRED



SW-1, 19 NOV 2009 to 17 DEC 2009

SW-1, 19 NOV 2009 to 17 DEC 2009



DENVER, COLORADO
Amdt 1B 09127

39°52'N-104°40'W

DENVER INTL (DEN)
ILS RWY 35R (CAT II)

CATEGORY II ILS - SPECIAL AIRCREW & AIRCRAFT CERTIFICATION REQUIRED