

DENVER, COLORADO

AL-9077 (FAA)

LOC/DME I-DPP 110.15 Chan 38(Y)	APP CRS 350°	Rwy Idg TDZE Apt Elev	12000 5367 5431
---	------------------------	-----------------------------	--

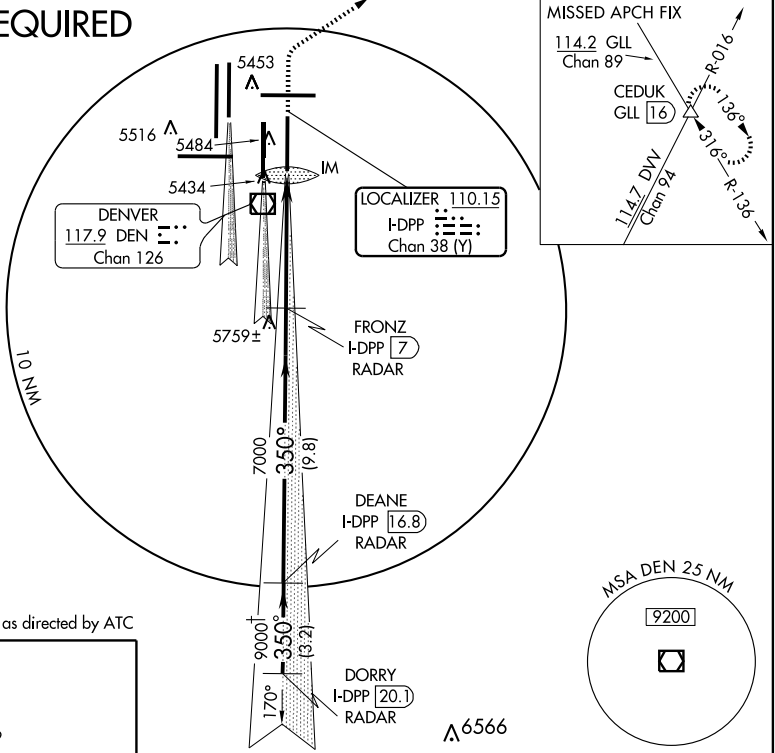
ILS RWY 35R (CAT III)

DENVER INTL (DEN)

Simultaneous approaches authorized with Rwy 34R and Rwy 35L. MISSED APPROACH: Climb to 5800, then climbing right turn to 10000 via 045° heading and GLL VORTAC R-136 to CEDUK INT/ GLL 16 DME and hold.

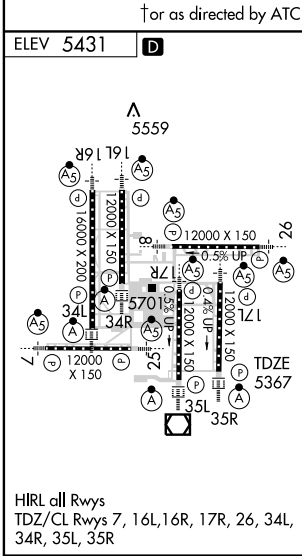
ATIS 125.6 379.9	DENVER APP CON 119.3 307.3 120.35 379.3 (NORTH) (SOUTH)	DENVER TOWER 124.3 256.85	GND CON 121.85 377.1	CLNC DEL 118.75
----------------------------	--	-------------------------------------	--------------------------------	---------------------------

RADAR REQUIRED



SW-1, 11 MAR 2010 to 08 APR 2010

SW-1, 11 MAR 2010 to 08 APR 2010



5800	10000	GLL R-136	CEDUK	FRONZ I-DPP [7]	DEANE I-DPP [16.8]	DORRY I-DPP [20.1]
↑	↘ 045°	114.2	△	RADAR	RADAR	RADAR
↑ or as directed by ATC						
5367 MSL	IM 5471	7000	7000	9000†	9000†	GS 3.00° TCH 59
-1126' 860'		4.7 NM		9.8 NM		3.2 NM
CATEGORY	A	B	C	D		
S-ILS 35R		CAT IIIa	RVR 07			
S-ILS 35R		CAT IIIb	RVR 03			
S-ILS 35R		CAT IIIc	NA			

CATEGORY III ILS - SPECIAL AIRCREW & AIRCRAFT CERTIFICATION REQUIRED

DENVER, COLORADO
Amdt 1B 09351

39°52'N-104°40'W

DENVER INTL (DEN)
ILS RWY 35R (CAT III)