


ILS or LOC RWY 17L

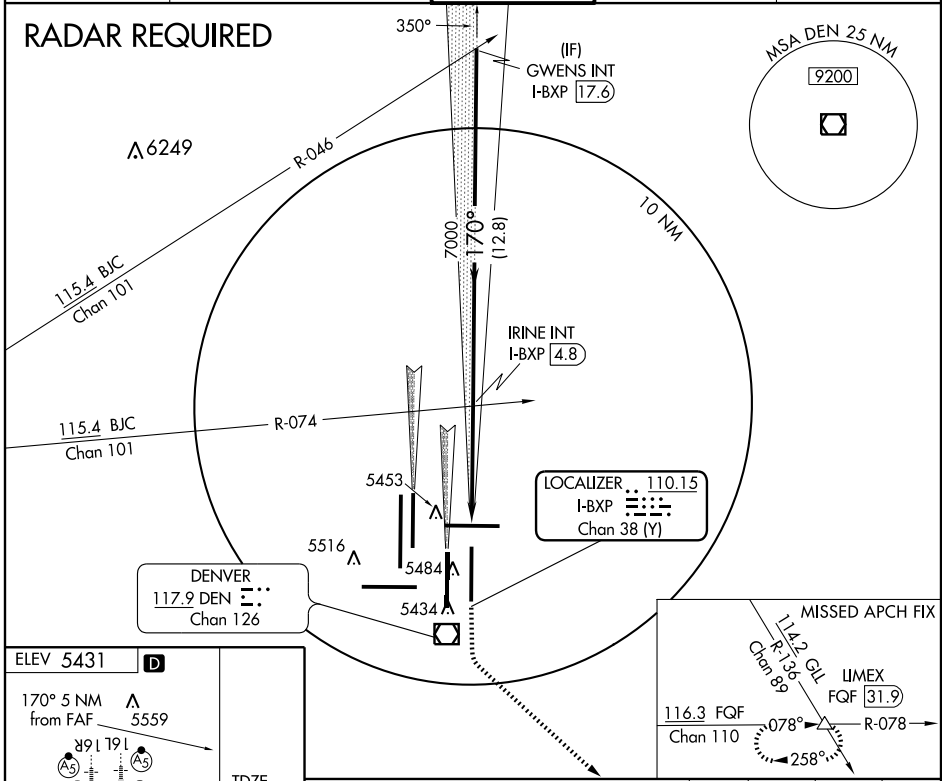
DENVER INTL (DEN)

LOC/DME I-BXP 110.15 Chan 38 (Y)	APP CRS 170°	Rwy Idg 12000 TDZE 5335 Apt Elev 5431
--	------------------------	--

Simultaneous approaches authorized with Rwy 16L and 17R.
S-LOC minima not authorized during simultaneous operations.
** RVR 1800 authorized with the use of FD or AP or HUD to DA.

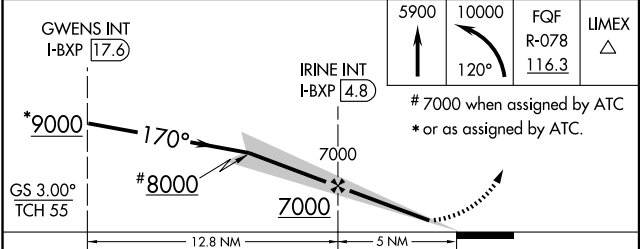
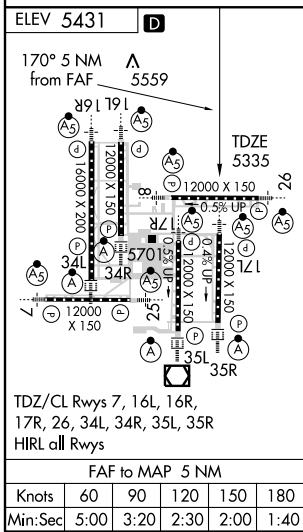
MALSR  MISSED APPROACH: Climb to 5900, then climbing left turn to 10000 via 120° heading and FQF VORTAC R-078 to LIMEX INT/FQF 31.9 DME and hold.

ATIS 125.6 379.9	DENVER APP CON 119.3 307.3 120.35 379.3 (NORTH) (SOUTH)	DENVER TOWER 124.3 256.85	GND CON 121.85 377.1	CLNC DEL 118.75
----------------------------	--	-------------------------------------	--------------------------------	---------------------------



SW-1, 19 NOV 2009 to 17 DEC 2009

SW-1, 19 NOV 2009 to 17 DEC 2009



CATEGORY	A	B	C	D
S-ILS 17L	** 5535/24 200 (200-½)			
S-LOC 17L	5700/24 365 (300-½)			5700/40 365 (300-¾)
CIRCLING	NA			