

DENVER, COLORADO

AL-9077 (FAA)

# ILS or LOC RWY 34L

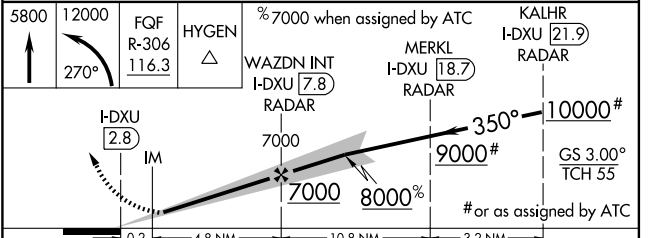
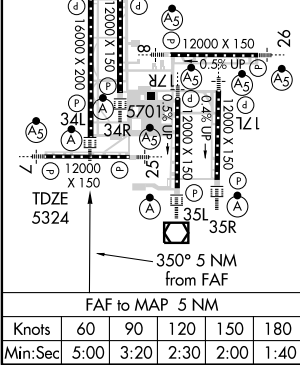
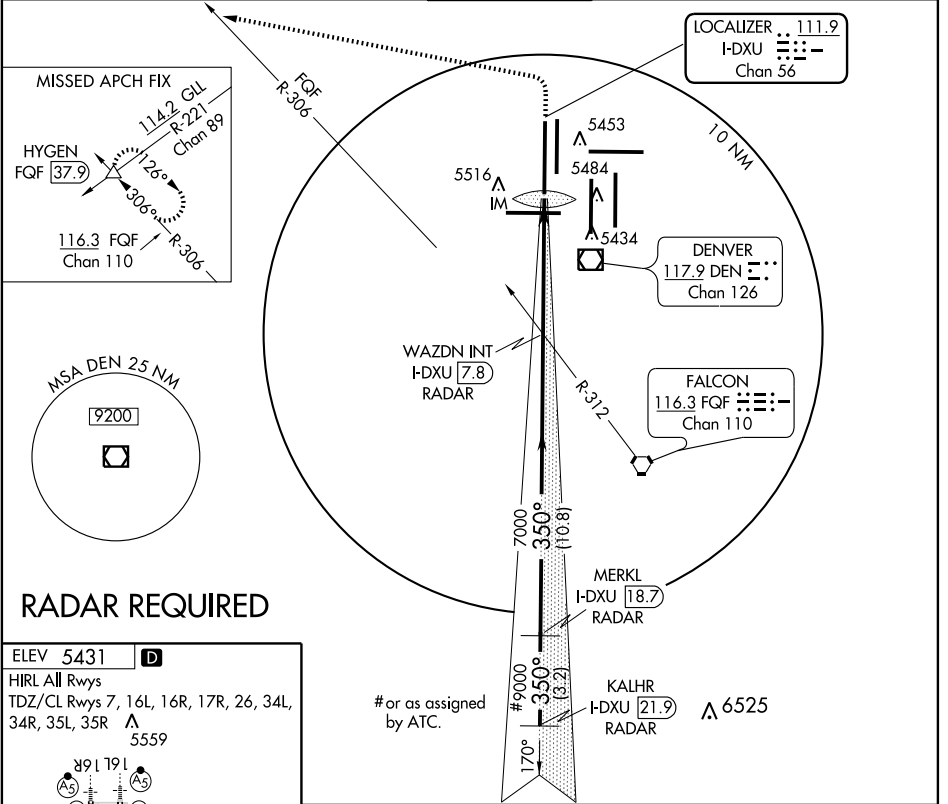
DENVER INTL (DEN)

LOC/DME I-DXU <b>111.9</b> Chan <b>56</b>	APP CRS <b>350°</b>	Rwy Idg TDZE <b>5324</b> Apt Elev <b>5431</b>
---	------------------------	---

Simultaneous approaches authorized with Rwy 35L and 35R.  
S-LOC minima not authorized during simultaneous operations.  
\* DME or RADAR required.

ALSIF-2  
MISSED APPROACH: Climb to 5800, then climbing left turn to 12000 via 270° heading and FQF VORTAC R-306 to HYGEN INT/FQF 37.9 DME and hold.

ATIS <b>125.6 379.9</b>	DENVER APP CON <b>119.3 307.3 120.35 379.3</b> (NORTH) (SOUTH)	DENVER TOWER <b>135.3 351.95</b>	GND CON <b>127.5 379.175</b>	CLNC DEL <b>118.75</b>
----------------------------	--	-------------------------------------	---------------------------------	---------------------------



CATEGORY	A	B	C	D
S-ILS 34L	5524/18 200 (100-1/2)			
S-LOC 34L*	5940/24	616 (600-1/2)	5940/60	5940-1 1/2
CIRCLING	NA			

DENVER, COLORADO  
Orig-A 09127

39°52'N-104°40'W

# DENVER INTL (DEN)

## ILS or LOC RWY 34L

SW-1, 19 NOV 2009 to 17 DEC 2009

SW-1, 19 NOV 2009 to 17 DEC 2009