

DENVER, COLORADO

AL-9077 (FAA)

RNAV (GPS) RWY 16L

DENVER INTL (DEN)

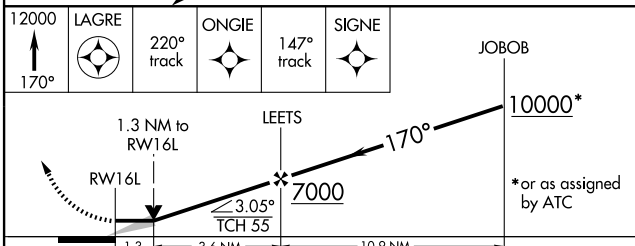
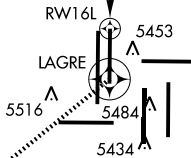
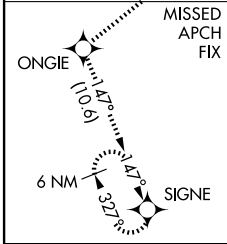
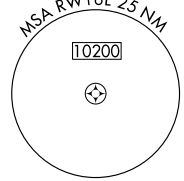
APP CRS 170°	Rwy Idg TDZE Apt Elev	12000 5354 5431
------------------------	-----------------------------	--

NA GPS or RNP-0.3 required. DME/DME RNP-0.3 NA.	MALSR AS	MISSED APPROACH: Climb to 12000 via 170° course to LAGRE WP, then 220° track to ONGIE WP, then 147° track to SIGNE WP and hold.

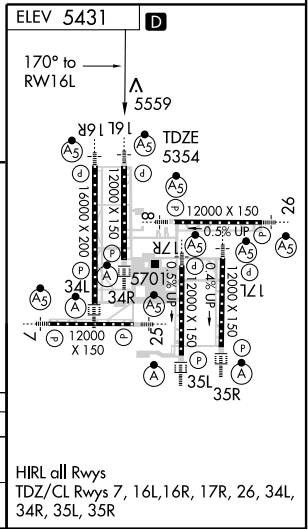
ATIS 125.6 379.9	DENVER APP CON 119.3 307.3 120.35 379.3 (NORTH) (SOUTH)	DENVER TOWER 135.3 351.95	GND CON 127.5 379.175	CLNC DEL 118.75
----------------------------	--	-------------------------------------	---------------------------------	---------------------------

RADAR REQUIRED

△ 6249



CATEGORY	A	B	C	D
LNVA MDA	5820/24	466 (400-½)	5820/40 466 (400-¾)	5820/50 466 (400-1)
CIRCLING	NA			



SW-1, 11 MAR 2010 to 08 APR 2010

SW-1, 11 MAR 2010 to 08 APR 2010

DENVER, COLORADO
Orig-A 09127

39°52'N-104°40'W

DENVER INTL (DEN)

RNAV (GPS) RWY 16L