

DENVER, COLORADO

AL-9077 (FAA)

RNAV (GPS) RWY 16R

DENVER INTL (DEN)

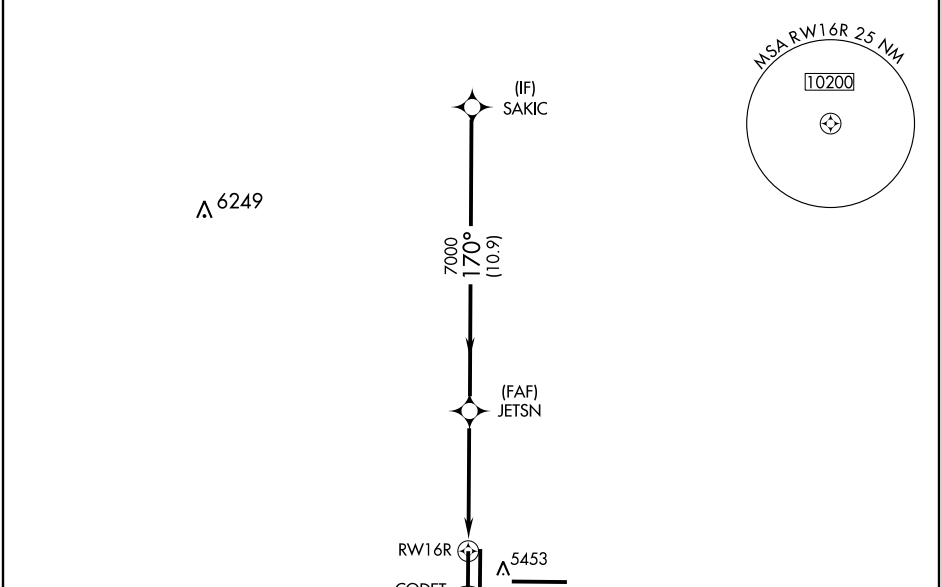
APP CRS 170°	Rwy Idg 16000
	TDZE 5323
	Apt Elev 5431

NA GPS or RNP-0.3 required. DME/DME RNP-0.3 NA.



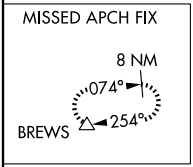
MISSED APPROACH: Climb to 13000 direct CODET WP and via 230° track to BREWS WP and hold.

ATIS 125.6 379.9	DENVER APP CON 119.3 307.3 120.35 379.3 (NORTH) (SOUTH)	DENVER TOWER 135.3 351.95	GND CON 127.5 379.175	CLNC DEL 118.75
----------------------------	--	-------------------------------------	---------------------------------	---------------------------

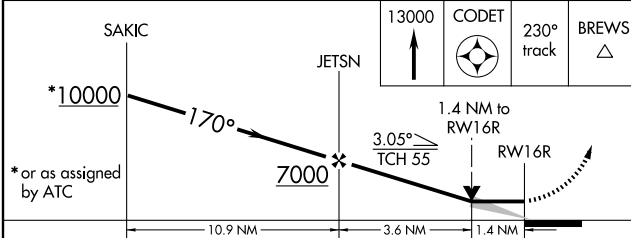
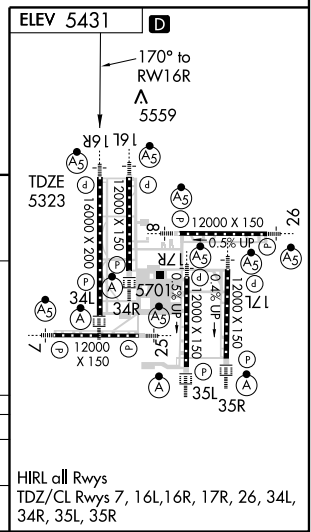


SW-1, 11 MAR 2010 to 08 APR 2010

SW-1, 11 MAR 2010 to 08 APR 2010



RADAR REQUIRED



CATEGORY	A	B	C	D
LNVA MDA	5820/24	497 (400-½)	5820/40 497 (400-¾)	5820/50 497 (400-1)
CIRCLING	NA			

DENVER, COLORADO
Orig-A 09127

39°52'N-104°40'W

RNAV (GPS) RWY 16R

DENVER INTL (DEN)