


RNAV (GPS) RWY 17L

DENVER INTL (DEN)

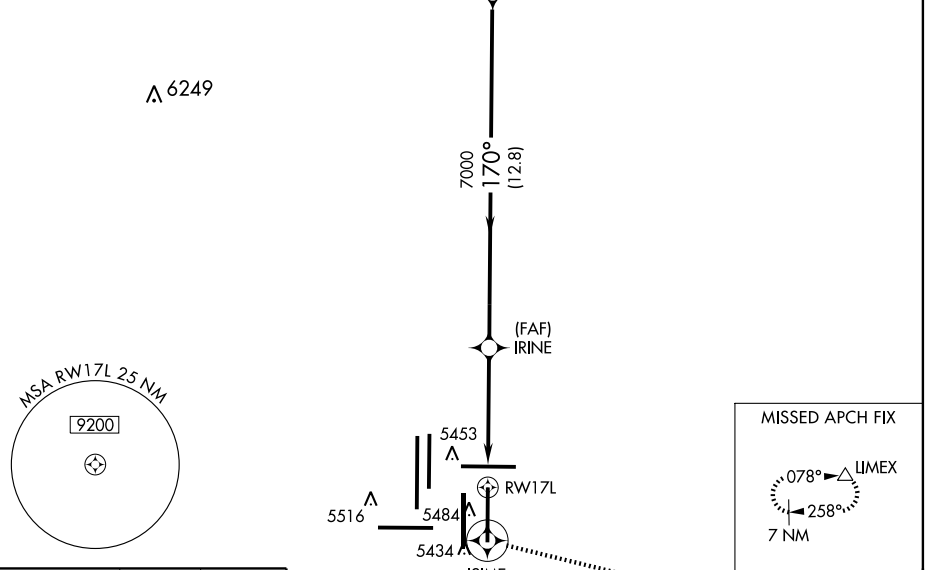
APP CRS 170°	Rwy Idg 12000
	TDZE 5335
	Apt Elev 5431

▽ GPS or RNP-0.3 required. DME/DME RNP-0.3 NA.
△ NA Baro-VNAV NA below -25°C (-13°F).
 For inoperative MALSRS increase LNAV CAT D visibility to RVR 6000.

MALSRS

MISSED APPROACH: Climb to 10000 via 170° course to ISIME WP, then via 093° track to LIMEX WP and hold.

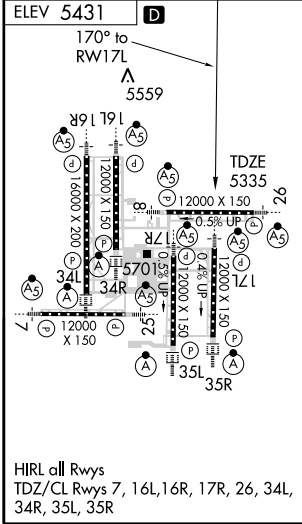
ATIS 125.6 379.9	DENVER APP CON 119.3 307.3 120.35 379.3 (NORTH) (SOUTH)	DENVER TOWER 124.3 256.85	GND CON 121.85 377.1	CLNC DEL 118.75
----------------------------	--	-------------------------------------	--------------------------------	---------------------------


RADAR REQUIRED



SW-1, 19 NOV 2009 to 17 DEC 2009

SW-1, 19 NOV 2009 to 17 DEC 2009



ELEV 5431	D				
170° to RWY 17L	△ 5559	TDZE 5335			
10000	ISIME	093° track	LIMEX	# or as assigned by ATC	GWENS
170°					9000#
*LNAV only					
	*1.1 NM to RWY 17L	IRINE	170°		GS 3.00° TCH 55
	1.1	3.9 NM	12.8 NM		
CATEGORY	A	B	C	D	
GLS PA DA	NA				
LNAV/VNAV DA	5700/40		365 (300-¾)		
LNAV MDA	5720/24	385 (300-½)		5720/50 385 (300-1)	
CIRCLING	NA				