

DENVER, COLORADO

AL-9077 (FAA)

RNAV (GPS) RWY 17R

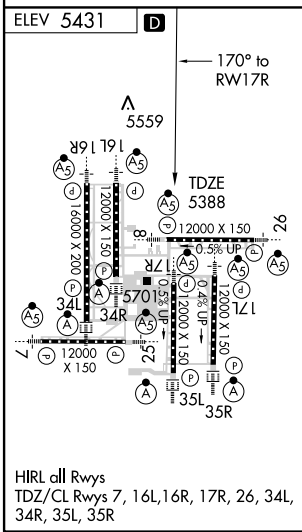
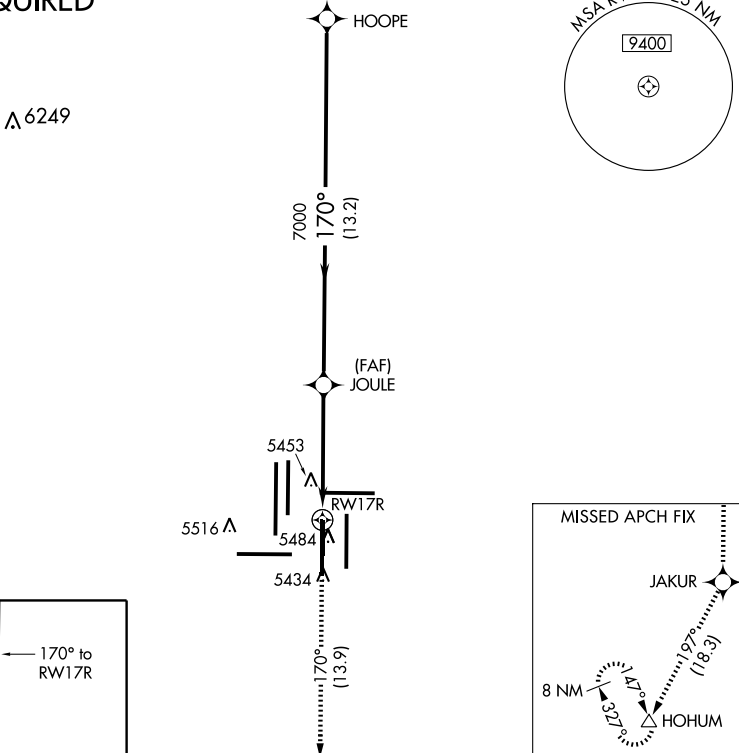
DENVER INTL (DEN)

APP CRS 170°	Rwy Idg 12000
	TDZE 5388
	Apt Elev 5431

<p>NA GPS or RNP-0.3 required. DME/DME RNP- 0.3 NA.</p>	<p>MALSRL</p>	<p>MISSED APPROACH: Climb to 10000 via 170° course to JAKUR WP, then via 197° track to HOHUM WP and hold.</p>
---	---------------	---

<p>ATIS 125.6 379.9</p>	<p>DENVER APP CON 119.3 307.3 120.35 379.3 (NORTH) (SOUTH)</p>	<p>DENVER TOWER 133.3 322.45</p>	<p>GND CON 121.85 377.1</p>	<p>CLNC DEL 118.75</p>
------------------------------------	---	---	--	-----------------------------------

RADAR REQUIRED



10000	JAKUR	197° track	HOHUM	HOPE
170°				
1.7 NM to RWY 17R	JOULE		11000*	
170°	170°			
3.05°	TCH 55			
1.7	3.2 NM	13.2 NM		
CATEGORY	A	B	C	D
LNNAV MDA	5920/24	532 (500-½)	5920/50 532 (500-1)	5920/60 532 (500-1¼)
CIRCLING	NA			

*or as assigned by ATC

SW-1, 19 NOV 2009 to 17 DEC 2009

SW-1, 19 NOV 2009 to 17 DEC 2009

DENVER, COLORADO
Orig 0912Z

39°52'N-104°40'W

DENVER INTL (DEN) RNAV (GPS) RWY 17R