

DENVER, COLORADO

AL-9077 (FAA)

RNAV (GPS) RWY 26

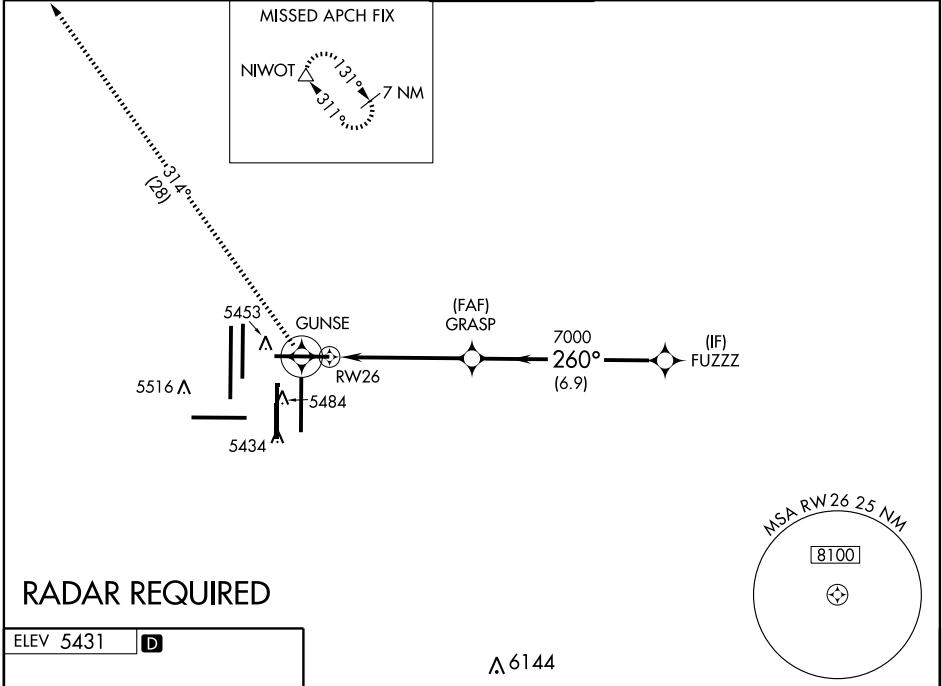
DENVER INTL (DEN)

APP CRS 260°	Rwy Idg 12000 TDZE 5306 Apt Elev 5431
------------------------	--

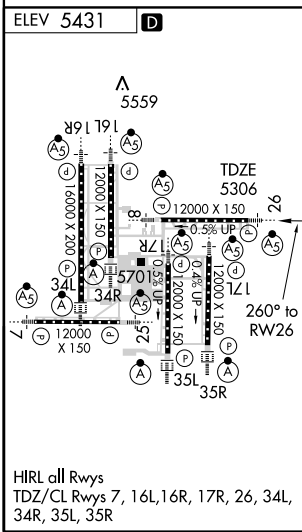
NA GPS or RNP-0.3 required. DME/DME RNP-0.3 NA. Baro/VNAV NA below -25°C (-13°F). For inoperative MALSR increase LNAV/VNAV Cat D visibility to RVR 5000.

MALSR
MISSED APPROACH: Climb to 11000 via 260° course to GUNSE WP, then via 314° track to NIWOT WP and hold.

ATIS 125.6 379.9	DENVER APP CON 119.3 307.3 120.35 379.3 (NORTH) (SOUTH)	DENVER TOWER 124.3 256.85	GND CON 121.85 377.1	CLNC DEL 118.75
----------------------------	--	-------------------------------------	--------------------------------	---------------------------



RADAR REQUIRED



ELEV 5431	D	Λ 6144			
11000	GUNSE	314° track	NIWOT	*or as assigned by ATC	FUZZ
↑ 260°					
# LNAV only		GRASP			9000*
# 1.3 NM to RW26					GS 3.00° TCH 55
	RW26				
	1.3	3.8 NM	6.9 NM		
CATEGORY	A	B	C	D	
GLS PA DA	NA				
LNAV/VNAV DA	5580/24		274 (200-½)		5580/40 274 (200-¾)
LNAV MDA	5760/24		454 (400-½)		5760/40 454 (400-¾)
CIRCLING	NA				

DENVER, COLORADO
Orig 09127

39°52'N-104°40'W

DENVER INTL (DEN)

RNAV (GPS) RWY 26

SW-1, 19 NOV 2009 to 17 DEC 2009

SW-1, 19 NOV 2009 to 17 DEC 2009