

DENVER, COLORADO

AL-9077 (FAA)

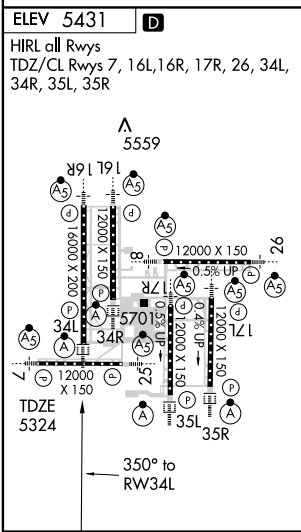
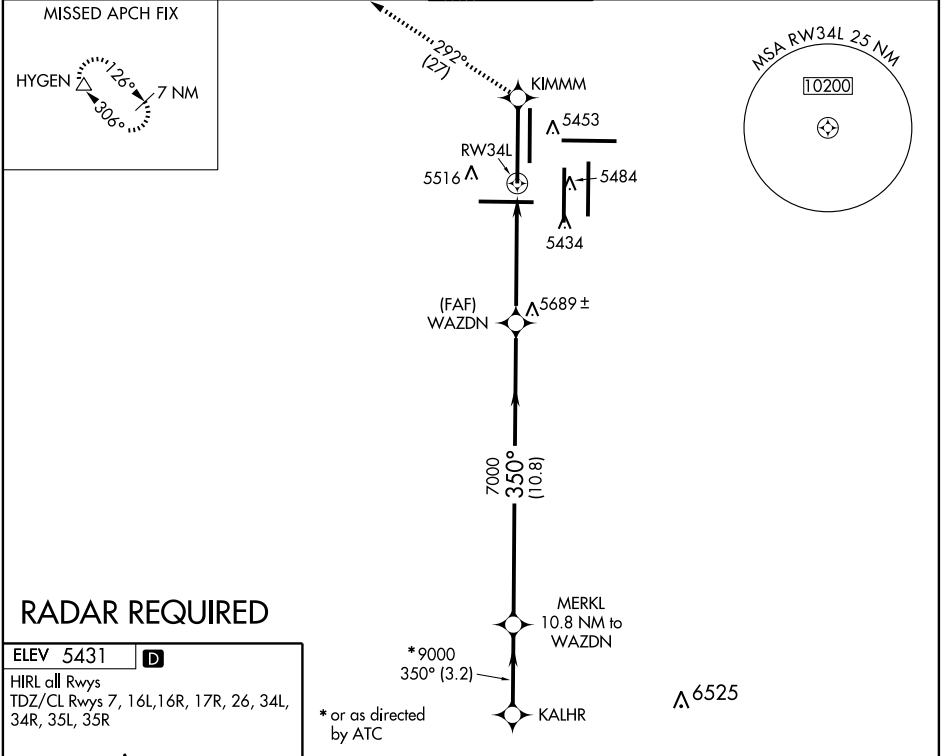
# RNAV (GPS) RWY 34L

DENVER INTL (DEN)

APP CRS <b>350°</b>	Rwy Idg <b>16000</b> TDZE <b>5324</b> Apt Elev <b>5431</b>
------------------------	--

<p><b>▽</b> Baro-VNAV NA below -25°C (-13°F)</p> <p><b>△</b> NA GPS or RNP-0.3 required. DME/DME RNP-0.3 NA.</p>	<p>ALS-F-2</p>	<p>MISSED APPROACH: Climb to 12000 direct KIMMM WP and via 292° track to HYGEN WP and hold.</p>
--	----------------	---

<p>ATIS <b>125.6 379.9</b></p>	<p>DENVER APP CON <b>119.3 307.3 120.35 379.3</b> (NORTH) (SOUTH)</p>	<p>DENVER TOWER <b>135.3 351.95</b></p>	<p>GND CON <b>127.5 379.175</b></p>	<p>CLNC DEL <b>118.75</b></p>
------------------------------------	---	---	---	-----------------------------------



12000	KIMMM	292° track	HYGEN	*or as directed by ATC	MERKL 10.8 NM to WAZDN	KALHR
# LNAV only	# 1.7 NM to RWY 34L	WAZDN				10000*
						9000*
						GS 3.00° TCH 55
	1.7 NM	3.3 NM	10.8 NM	3.2 NM		
CATEGORY	A					
GLS PA DA	NA					
LNAV/VNAV DA	5780/50 456 (400-1)					
LNAV MDA	5940/24	616 (600-1/2)	5940/60	616 (600-1/4)	5940-1 1/2	616 (600-1/2)
CIRCLING	NA					

SW-1, 11 MAR 2010 to 08 APR 2010

SW-1, 11 MAR 2010 to 08 APR 2010

DENVER, COLORADO  
Orig-A 09127

39°52'N-104°40'W

# RNAV (GPS) RWY 34L

DENVER INTL (DEN)