

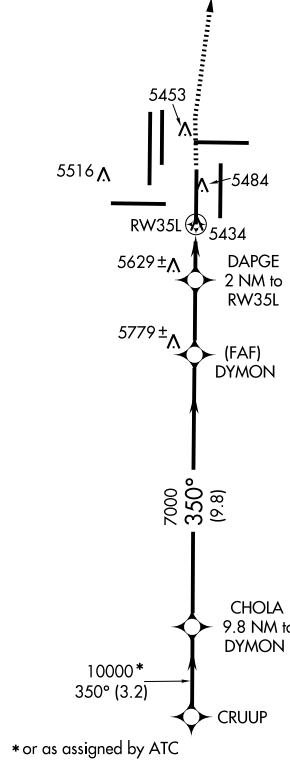
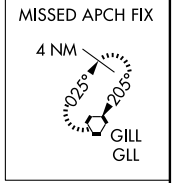
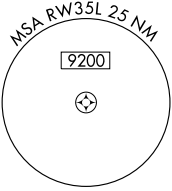
RNAV (GPS) RWY 35L

DENVER INTL (DEN)

APP CRS 350°	Rwy Idg 12000
	TDZE 5431
	Apt Elev 5431

NA GPS or RNP-0.3 required. DME/DME RNP- 0.3 NA.	ALSIF-2	MISSED APPROACH: Climb to 10000 then right turn direct GLL VORTAC and hold.

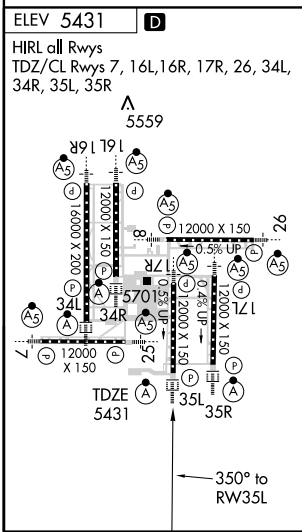
ATIS 125.6 379.9	DENVER APP CON 119.3 307.3 120.35 379.3 (NORTH) (SOUTH)	DENVER TOWER 133.3 322.45	GND CON 121.85 377.1	CLNC DEL 118.75
----------------------------	--	-------------------------------------	--------------------------------	---------------------------



SW-1, 19 NOV 2009 to 17 DEC 2009

SW-1, 19 NOV 2009 to 17 DEC 2009

RADAR REQUIRED



10000	GILL	CHOLA 9.8 NM to DYMON	CRUUP
6100	DAPGE 2 NM to RW35L	DYMON	11000*
7000	1.2 NM to RW35L	3.05° TCH 55	10000*
	1.2	0.8	2.7 NM
		9.8 NM	3.2 NM
CATEGORY	A	B	C
LNNAV MDA	5860/24	429 (500-½)	5860/40 429 (500-¾)
CIRCLING	NA		