

RNAV (GPS) RWY 7

DENVER INTL (DEN)

APP CRS	Rwy Idg	12000
079°	TDZE	5348
	Apt Elev	5431

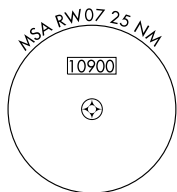
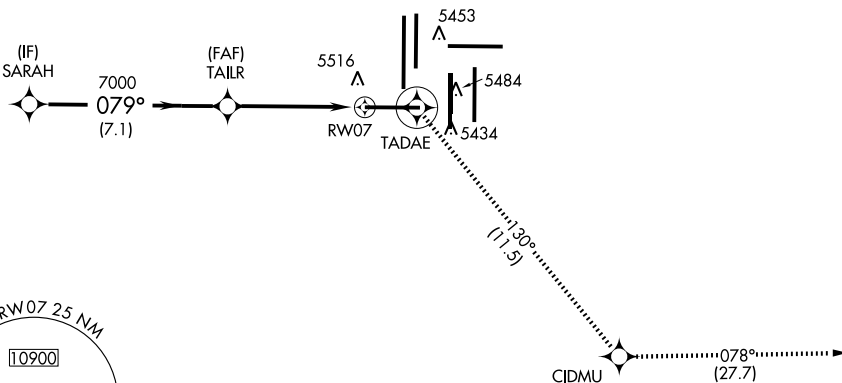
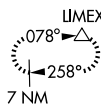
NA GPS or RNP-0.3 required. DME/DME RNP-0.3 NA.
Baro/VNAV NA below -25°C (-13°F).
For inoperative MALS R increase LNAV Cat D visibility to RVR 6000.

MALS R MISSED APPROACH: Climb to 10000 via 079° course to TADAE WP then 130° track to CIDMU WP then 078° track to LIMEX WP and hold.

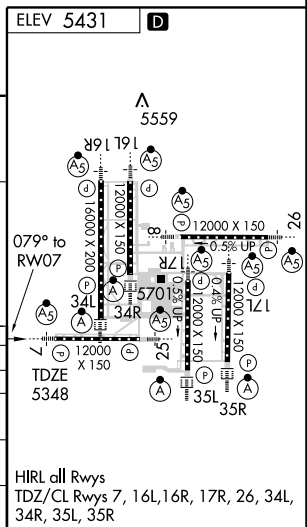
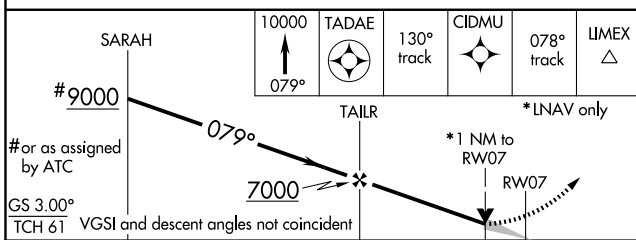
ATIS	DENVER APP CON	DENVER TOWER	GND CON	CLNC DEL
125.6 379.9	119.3 307.3 120.35 379.3 (NORTH) (SOUTH)	132.35 273.55	127.5 379.175	118.75

RADAR REQUIRED

MISSED APCH FIX



6270±



CATEGORY	A	B	C	D
GLS/PA DA	NA			
LNAV/VNAV DA	5740/40 392 (400-¾)			
LNAV MDA	5740/24 392 (400-½)		5740/50 392 (400-1)	
CIRCLING	NA			