

DENVER, COLORADO

AL-9077 (FAA)

RNAV (GPS) RWY 8 DENVER INTL (DEN)

APP CRS	Rwy Idg	12000
079°	TDZE	5351
	Apt Elev	5431

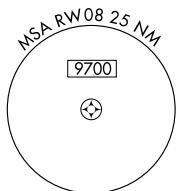
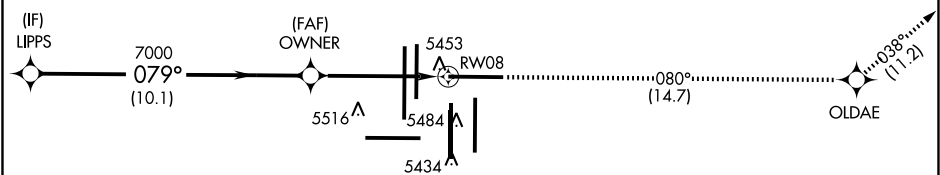
NA GPS or RNP-0.3 required. DME/DME RNP-0.3 NA.	MALS
---	------

MISSED APPROACH: Climb to 10000 via 080° course to OLDAE WP then 038° track to WITNE WP and hold.

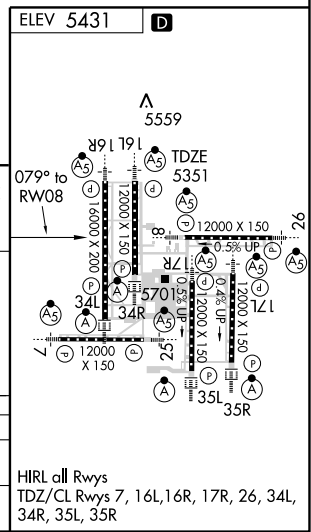
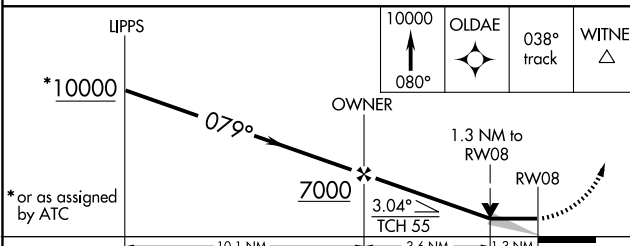
ATIS 125.6 379.9	DENVER APP CON 119.3 307.3 120.35 379.3 (NORTH) (SOUTH)	DENVER TOWER 124.3 256.85	GND CON 121.85 377.1	CLNC DEL 118.75
----------------------------	--	-------------------------------------	--------------------------------	---------------------------



SW-1, 19 NOV 2009 to 17 DEC 2009



RADAR REQUIRED



	10.1 NM		3.6 NM		1.3 NM
CATEGORY	A	B	C	D	
LNAV MDA	5820/24	469 (400-½)	5820/40	5820/50	
CIRCLING	NA				

DENVER, COLORADO
Orig 09127

39°52'N-104°40'W

DENVER INTL (DEN) RNAV (GPS) RWY 8

SW-1, 19 NOV 2009 to 17 DEC 2009