

# RNAV (GPS) RWY 32

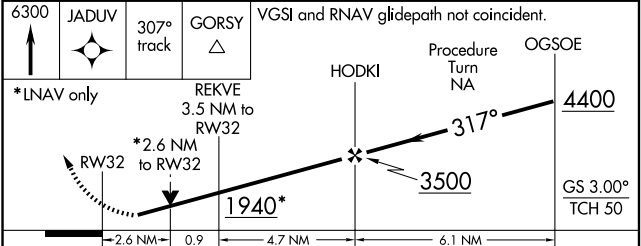
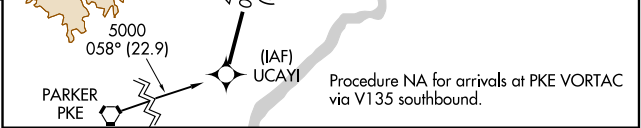
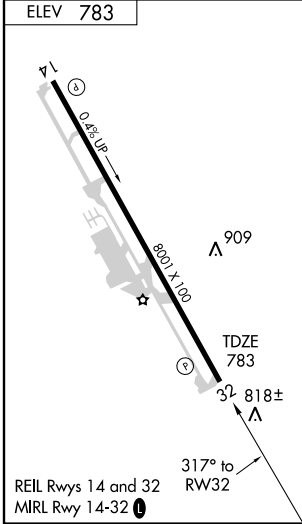
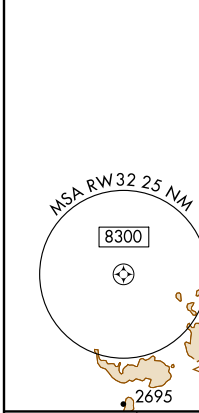
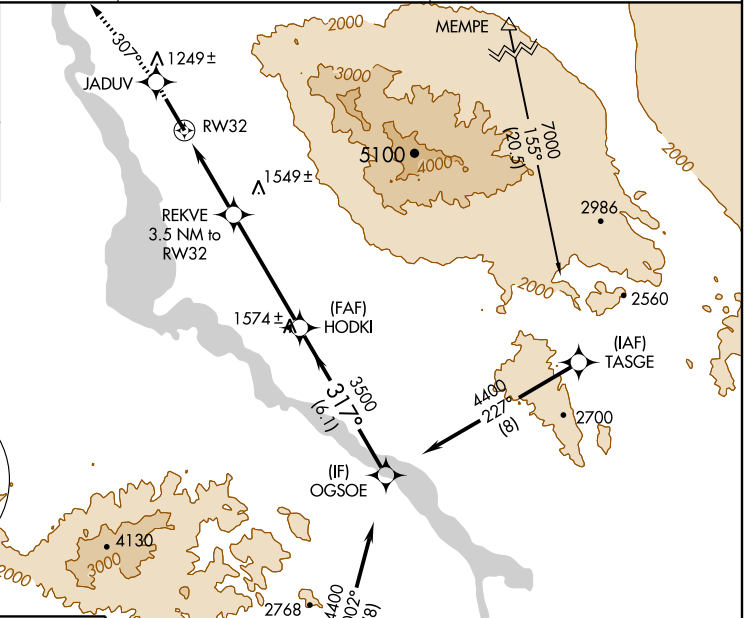
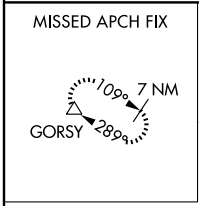
LAKE HAVASU CITY (HII)

WAAS CH <b>49110</b> <b>W32A</b>	APP CRS <b>317°</b>	Rwy Idg TDZE Apt Elev	<b>8001</b> <b>783</b> <b>783</b>
--	------------------------	-----------------------------	---

**NA** DME/DME RNP-0.3 NA. Visibility reduction by helicopters NA. When local altimeter setting not received, use Needles altimeter setting and increase all DA/MDA 80 feet and all visibilities ½ mile. VDP NA when using Needles altimeter setting. Circling NA northeast of Rwy 14-32.

**MISSED APPROACH:** Climb to 6300 direct JADUV and via 307° track to GORSY and hold, continue climb-in-hold to 6300.

AWOS-3 <b>119.025 364</b>	LOS ANGELES CENTER <b>134.65 314.2</b>	UNICOM <b>122.7 (CTAF)</b>
------------------------------	---	-------------------------------



CATEGORY	A	B	C	D
LPV DA		1265-1¾	482 (500-1¾)	
LNAV MDA	1660-1 877 (900-1)	1660-1¼ 877 (900-1¼)	1660-2½ 877 (900-2½)	1660-2¾ 877 (900-2¾)
CIRCLING	1660-1 877 (900-1)	1660-1¼ 877 (900-1¼)	1660-2½ 877 (900-2½)	1660-2¾ 877 (900-2¾)

SW-4, 19 NOV 2009 to 17 DEC 2009

SW-4, 19 NOV 2009 to 17 DEC 2009