

VOR/DME or GPS RWY 27

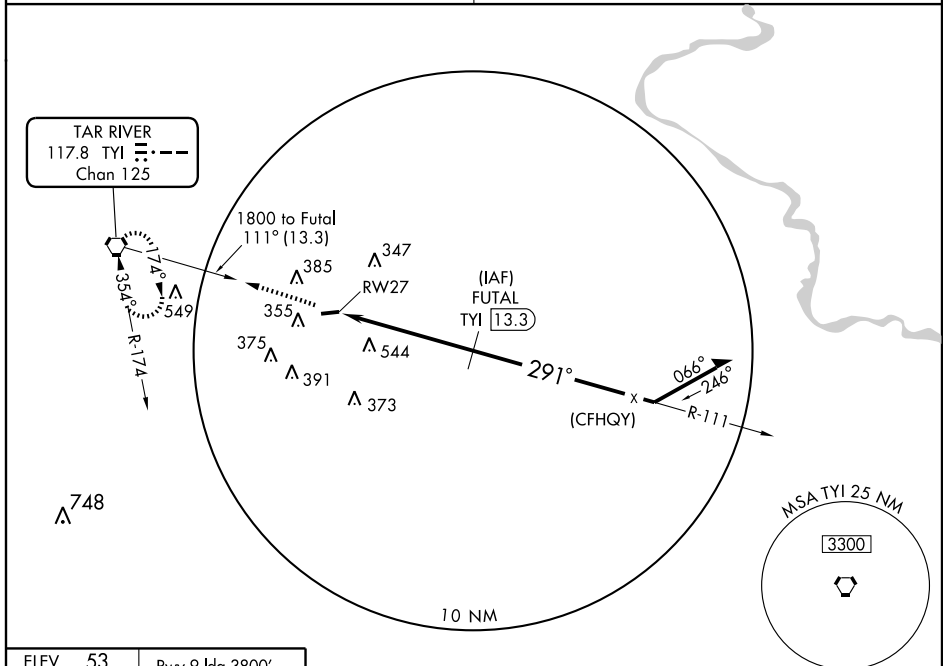
TARBORO-EDGEcombe (E/T/C)

VORTAC TYI 117.8 Chan 125	APP CRS 291°	Rwy Idg 4000 TDZE 50 Apt Elev 53
---	------------------------	---

▼ Use Rocky Mount altimeter setting; when not received
▲ NA use Raleigh-Durham altimeter setting minimums.

MISSED APPROACH: Climb to 2000 direct TYI VORTAC and hold.

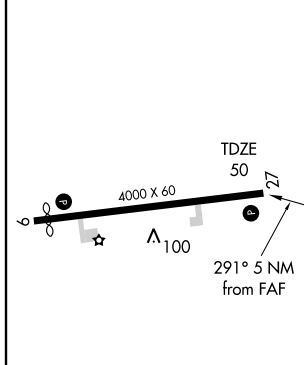
WASHINGTON CENTER **118.475 279.65** CTAF **122.90**



SE-2, 11 MAR 2010 to 08 APR 2010

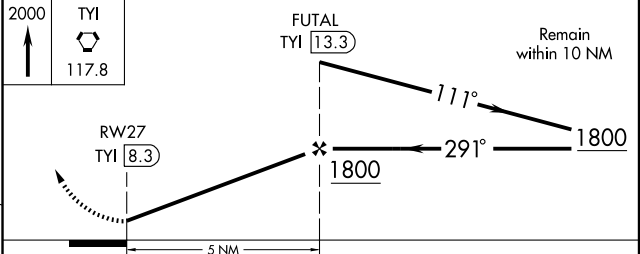
SE-2, 11 MAR 2010 to 08 APR 2010

ELEV **53** Rwy 9 Idg 3800'



REIL Rwy 27 **Ⓛ**
 MIRL Rwy 9-27 **Ⓛ**

Knots	60	90	120	150	180
Min:Sec					



CATEGORY	A	B	C	D
S-27	860-1 810 (900-1)	860-1¼ 810 (900-1¼)	860-2¼ 810 (900-2¼)	860-2½ 810 (900-2½)
CIRCLING	860-1 807 (900-1)	860-1¼ 807 (900-1¼)	860-2¼ 807 (900-2¼)	920-2¾ 867 (900-2¾)
RALEIGH-DURHAM ALTIMETER SETTING MINIMUMS				
S-27	1080-1¼ 1030 (1100-1¼)	1080-1½ 1030 (1100-1½)	1080-3	1030 (1100-3)
CIRCLING	1080-1¼ 1027 (1100-1¼)	1080-1½ 1027 (1100-1½)	1080-3	1140-3 1087 (1100-3)