

VOR/DME-A

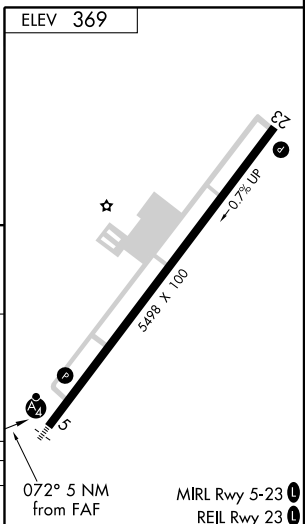
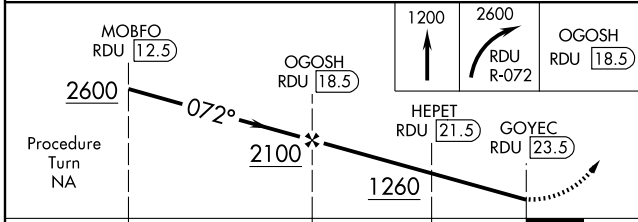
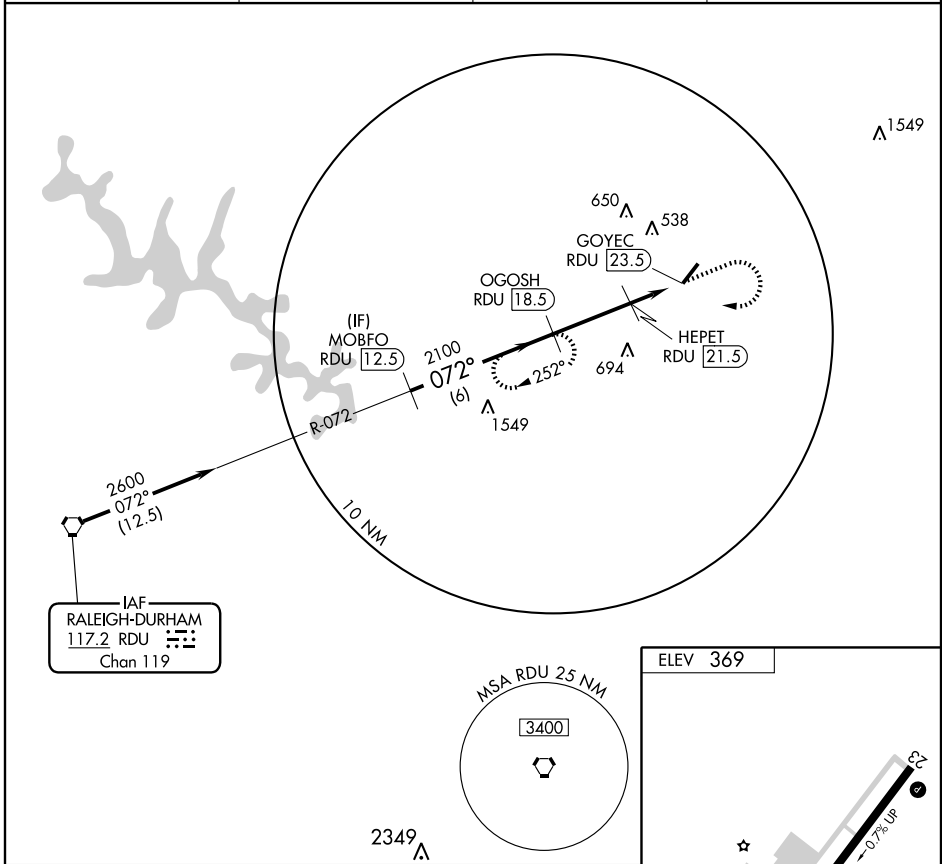
LOUISBURG/ FRANKLIN COUNTY (L.H.Z)

VORTAC RDU 117.2 Chan 119	APP CRS 072°	Rwy Idg TDZE Apt Elev	N/A N/A 369
---	------------------------	-----------------------------	--

⚠ If local altimeter setting not received, use Raleigh-Durham altimeter setting and increase all MDAs 80 feet.

MISSED APPROACH: Climb to 1200 then climbing right turn to 2600 via RDU R-072 to OGOSH/RDU 18.5 DME and hold.

AWOS-3 118.325	RALEIGH APP CON 125.3 380.05	GCO 135.075	UNICOM 123.0 (CTAF) 0
--------------------------	--	-----------------------	--



CATEGORY	A	B	C	D
CIRCLING	1060-1	691 (700-1)	1060-2 691 (700-2)	1060-2 1/4 691 (700-2 1/4)

SE-2, 11 MAR 2010 to 08 APR 2010

SE-2, 11 MAR 2010 to 08 APR 2010