

# NDB RWY 36

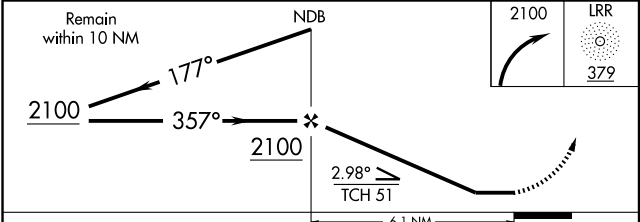
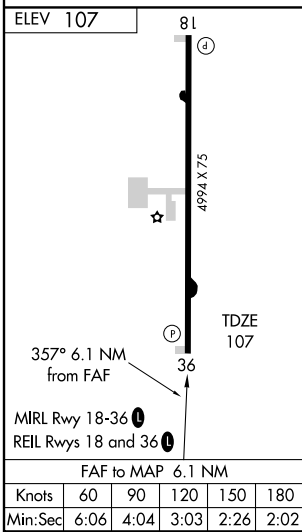
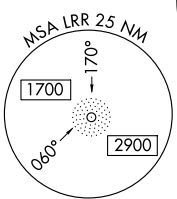
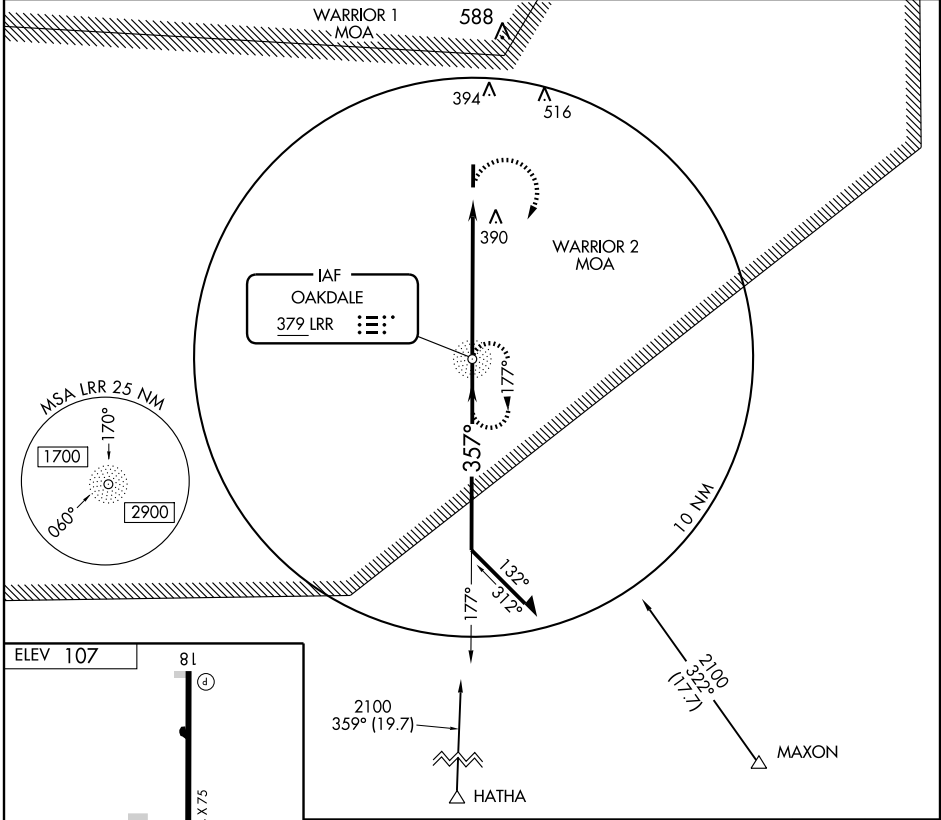
OAKDALE/ ALLEN PARISH (ACP)

NDB LRR <b>379</b>	APP CRS <b>357°</b>	Rwy Idg <b>4994</b>
		TDZE <b>107</b>
		Apt Elev <b>107</b>

**▽** If local altimeter setting not received, use Alexandria Intl altimeter setting and increase all MDAs 100 feet.

**▲ NA** MISSED APPROACH: Climbing right turn to 2100 direct LRR NDB and hold.

AWOS-3 <b>118.275</b>	POLK APP CON <b>123.7 254.8</b>	UNICOM <b>122.8 (CTAF) 0</b>
--------------------------	------------------------------------	---------------------------------



CATEGORY	A	B	C	D
S-36	760-1	653 (700-1)	760-1¾ 653 (700-1¾)	NA
CIRCLING	760-1	653 (700-1)	760-1¾ 653 (700-1¾)	NA

SC-4, 19 NOV 2009 to 17 DEC 2009

SC-4, 19 NOV 2009 to 17 DEC 2009