

WAAS CH 49214 W36A	APP CRS 357°	Rwy Idg 4994 TDZE 107 Apt Elev 107
--	------------------------	---

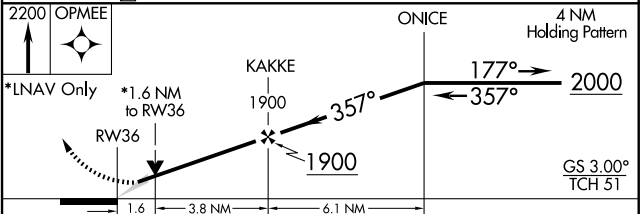
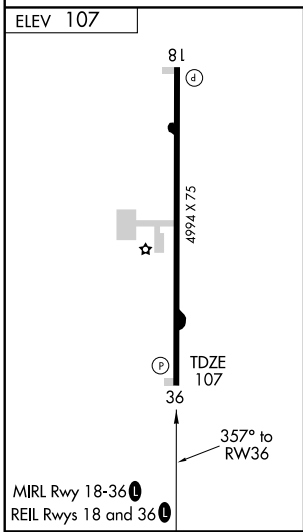
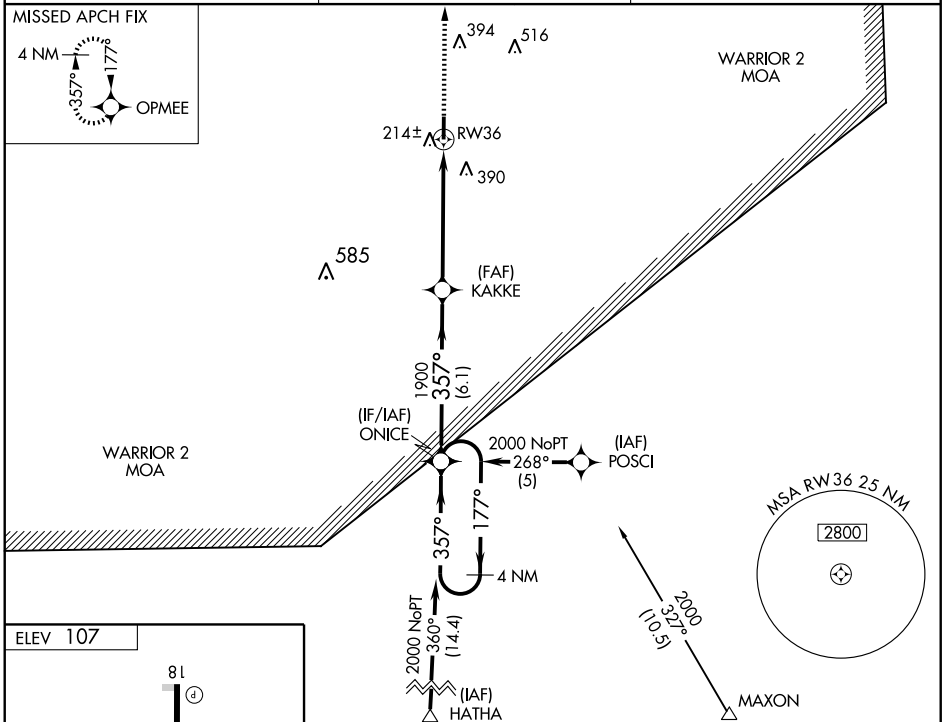
RNAV (GPS) RWY 36

OAKDALE/ ALLEN PARISH (ACP)

⚠ Baro-VNAV NA when using Alexandria Intl altimeter setting. For uncompensated Baro-VNAV systems, LNAV/VNAV NA below -15°C (5°F) or above 54°C (130°F). DME/DME RNP-0.3 NA. VDP NA when using Alexandria Intl altimeter setting. When local altimeter setting not received, use Alexandria Intl altimeter setting and increase all DA 84 feet, all MDA 100 feet. Increase LPV all Cats, LNAV Cat C and Circling Cat C visibility ½ mile, and LNAV/VNAV all Cats visibility ½ mile.

MISSED APPROACH:
Climb to 2200 direct OPMEE and hold.

AWOS-3 118.275	POLK APP CON 123.7 254.8	UNICOM 122.8 (CTAF) ①
--------------------------	------------------------------------	--



CATEGORY	A	B	C	D
LPV DA		413-1	306 (400-1)	NA
LNAV/ VNAV DA		702-2	595 (600-2)	NA
LNAV MDA	660-1	553 (600-1)	660-1½ 553 (600-1½)	NA
CIRCLING	660-1 553 (600-1)	740-1 633 (700-1)	740-1½ 633 (700-1½)	NA

SC-4, 19 NOV 2009 to 17 DEC 2009

SC-4, 19 NOV 2009 to 17 DEC 2009