

OAKDALE, LOUISIANA

AL-9133 (FAA)

WAAS CH <b>77914</b> <b>W18A</b>	APP CRS <b>177°</b>	Rwy Idg <b>4994</b> TDZE <b>104</b> Apt Elev <b>107</b>
--	------------------------	---

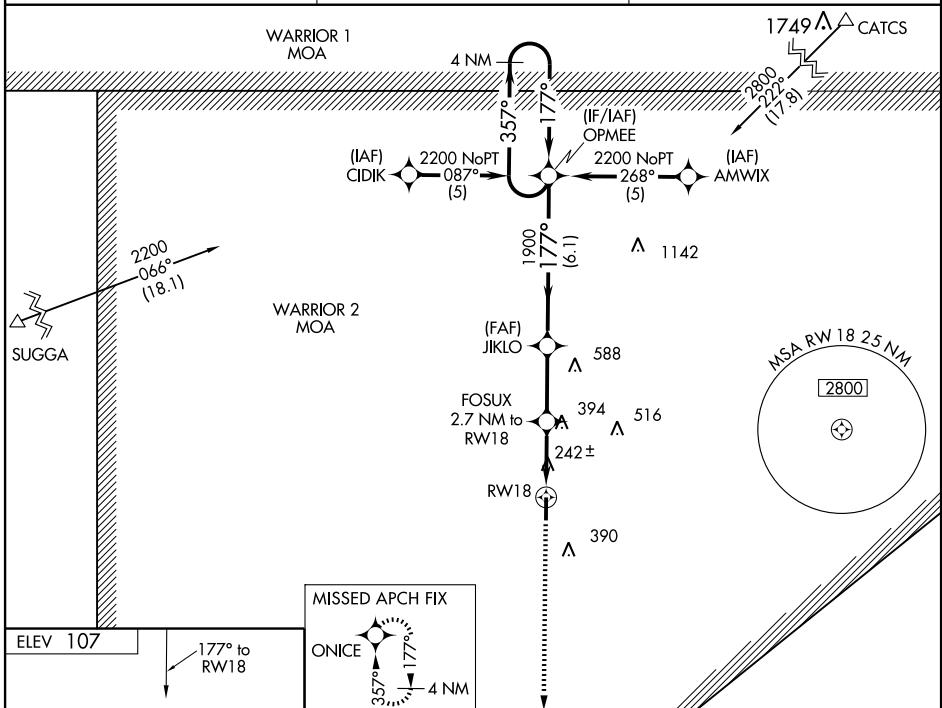
# RNAV (GPS) RWY 18

OAKDALE/ ALLEN PARISH (ACP)

Baro-VNAV NA when using Alexandria Intl altimeter setting. For uncompensated Baro-VNAV systems, LNAV/VNAV NA below -15°C (5°F) or above 54°C (130°F). DME/DME RNP-0.3 NA. Visibility reduction by helicopters NA. VDP NA when using Alexandria Intl altimeter setting. When local altimeter setting not received, use Alexandria Intl altimeter setting and increase all DA 84 feet, all MDA 100 feet. Increase LPV and LNAV/VNAV all Cats visibility ¼ mile, LNAV Cat C visibility ½ mile and Circling Cat C visibility ¼ mile.

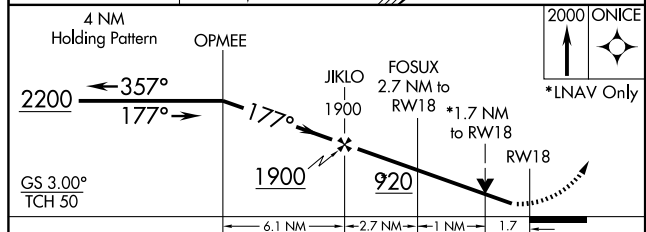
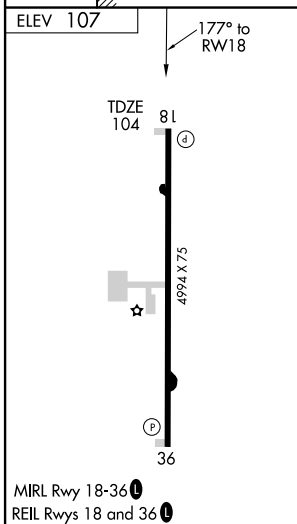
MISSED APPROACH: Climb to 2000 direct ONICE and hold.

AWOS-3 <b>118.275</b>	POLK APP CON <b>123.7 254.8</b>	UNICOM <b>122.8 (CTAF) 0</b>
--------------------------	------------------------------------	---------------------------------



SC-4, 19 NOV 2009 to 17 DEC 2009

SC-4, 19 NOV 2009 to 17 DEC 2009



CATEGORY	A	B	C	D
LPV DA	515-1½	411 (500-1½)		NA
LNAV/ VNAV DA	549-1½	445 (500-1½)		NA
LNAV MDA	700-1	596 (600-1)	700-1½ 596 (600-1½)	NA
CIRCLING	700-1 593 (600-1)	740-1 633 (700-1)	740-1¾ 633 (700-1¾)	NA

OAKDALE, LOUISIANA  
Orig 09239

30°45'N-92°41'W

# RNAV (GPS) RWY 18