

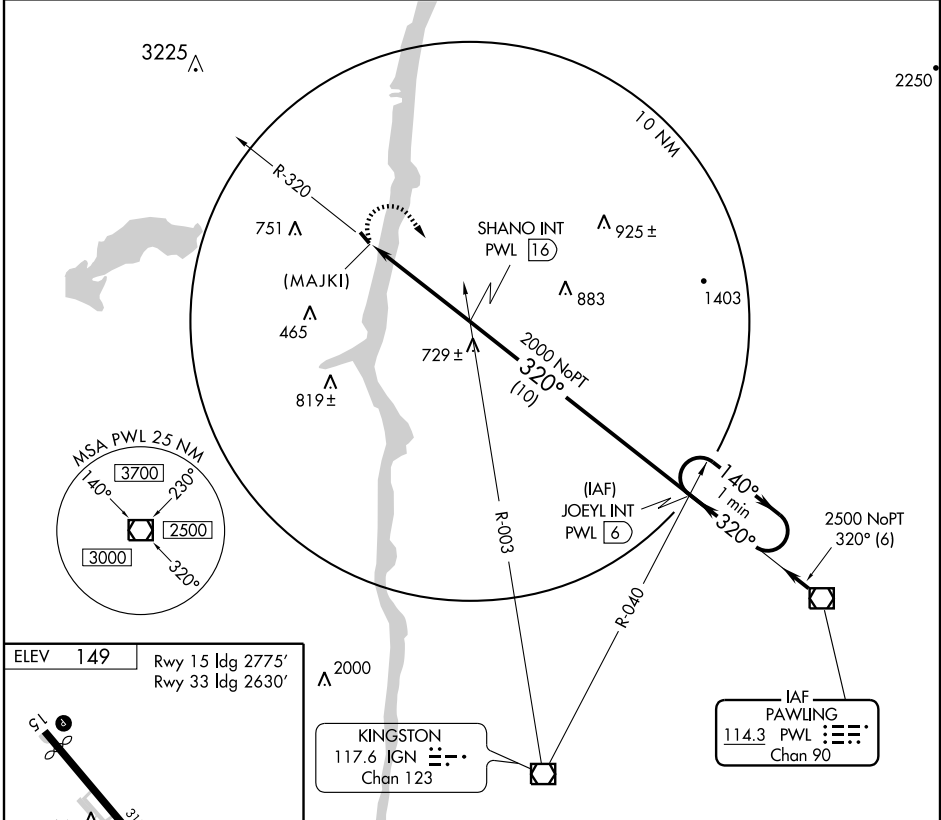
VOR or GPS-A  
KINGSTON-ULSTER (20N)

VOR/DME PWL <b>114.3</b> Chan <b>90</b>	APP CRS <b>320°</b>	Rwy ldg TDZE Apt Elev <b>N/A</b> <b>149</b>
---	------------------------	--

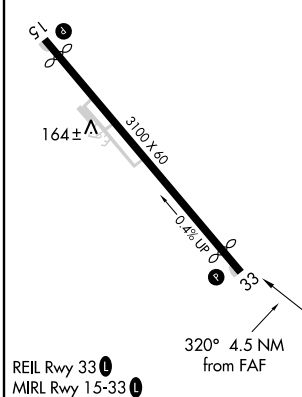
**NA** Use Columbia County altimeter setting; if not received, use Newburgh/Stewart Intl altimeter setting.

MISSED APPROACH: Climbing right turn to 2500 via PWL R-320 to JOEYL Int/PWL 6 DME and hold.

NEW YORK APP CON <b>132.75 363.1</b>	UNICOM <b>122.8</b> (CTAF)	<b>123.3</b> <b>0</b>
---	-------------------------------	-----------------------

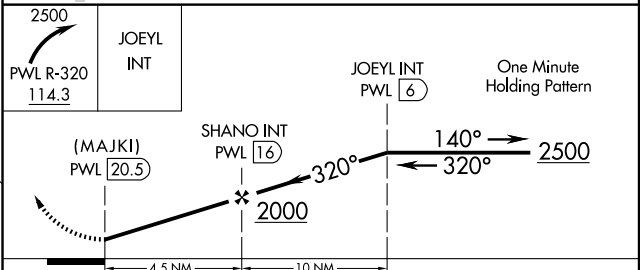


ELEV 149	Rwy 15 ldg 2775'
	Rwy 33 ldg 2630'



KINGSTON 117.6 IGN Chan 123

IAF PAWLING 114.3 PWT Chan 90



FAF to MAP 4.5 NM					
Knots	60	90	120	150	180
Min:Sec	4:30	3:00	2:15	1:48	1:30

CATEGORY	A	B	C	D
CIRCLING	1500-1¼ 1351 (1400-1¼)		NA	

NE-2, 19 NOV 2009 to 17 DEC 2009

NE-2, 19 NOV 2009 to 17 DEC 2009