

PANHANDLE, TEXAS

AL-9145 (FAA)

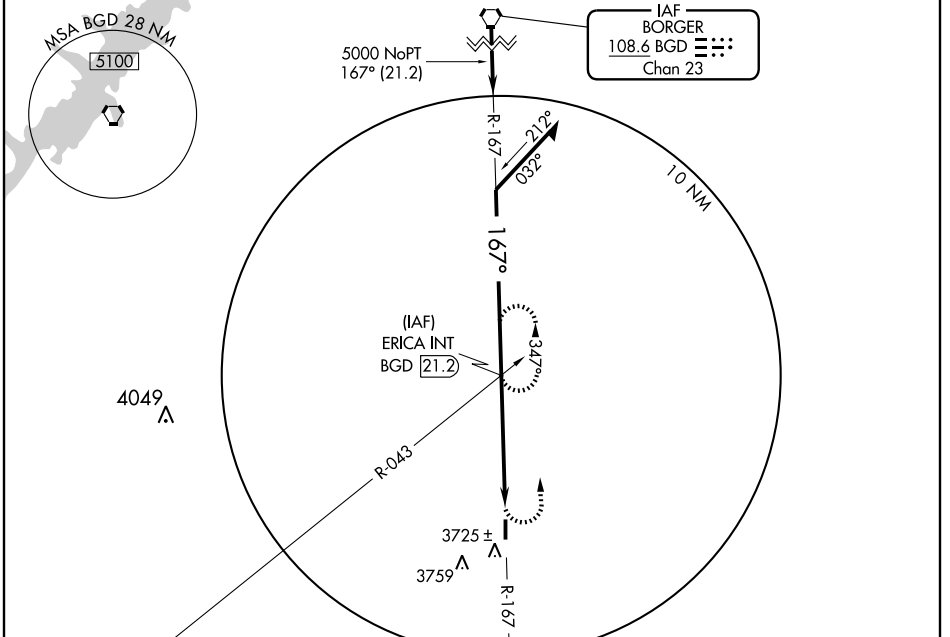
VORTAC BGD 108.6 Chan 23	APP CRS 167°	Rwy Idg TDZE Apt Elev	4405 3450 3452
---------------------------------------	------------------------	-----------------------------	---

VOR RWY 17

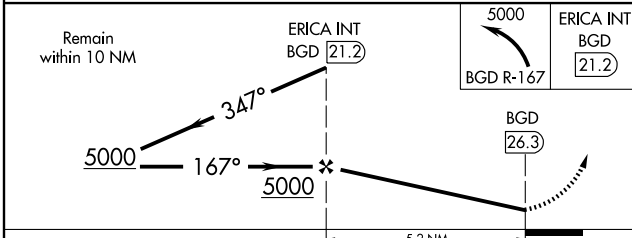
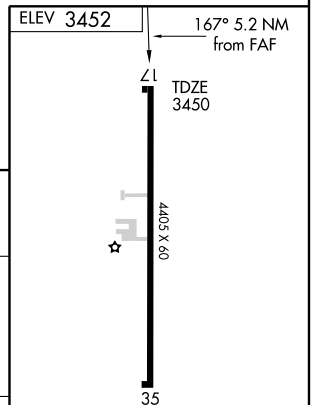
PANHANDLE-CARSON COUNTY (T45)

▲ NA Use Rick Husband Amarillo Intl altimeter setting. MISSED APPROACH: Climbing left turn to 5000 via BGD R-167 to ERICA Int 21.2 DME and hold.

AMARILLO APP CON * **119.5 307.0** UNICOM **122.7 (CTAF)** **123.5**



PANHANDLE
116.6 PNH
Chan 113



CATEGORY	A	B	C	D
S-17	3900-1 450 (500-1)	3900-1 1/4 450 (500-1 1/4)	3900-1 1/2 450 (500-1 1/2)	NA
CIRCLING	4140-1 688 (700-1)	4140-1 1/4 688 (700-1 1/4)	4140-2 688 (700-2)	NA

MIRL Rwy 17-35

FAF to MAP 5.2 NM					
Knots	60	90	120	150	180
Min:Sec	5:12	3:28	2:36	2:05	1:44

PANHANDLE, TEXAS
Orig 06215

35°22'N-101°22'W

PANHANDLE-CARSON COUNTY (T45)

VOR RWY 17

SC-2, 11 MAR 2010 to 08 APR 2010

SC-2, 11 MAR 2010 to 08 APR 2010