

LEADVILLE, COLORADO

AL-9146 (FAA)

APP CRS 161°	Rwy Idg 6400
	TDZE 9928
	Apt Elev 9928

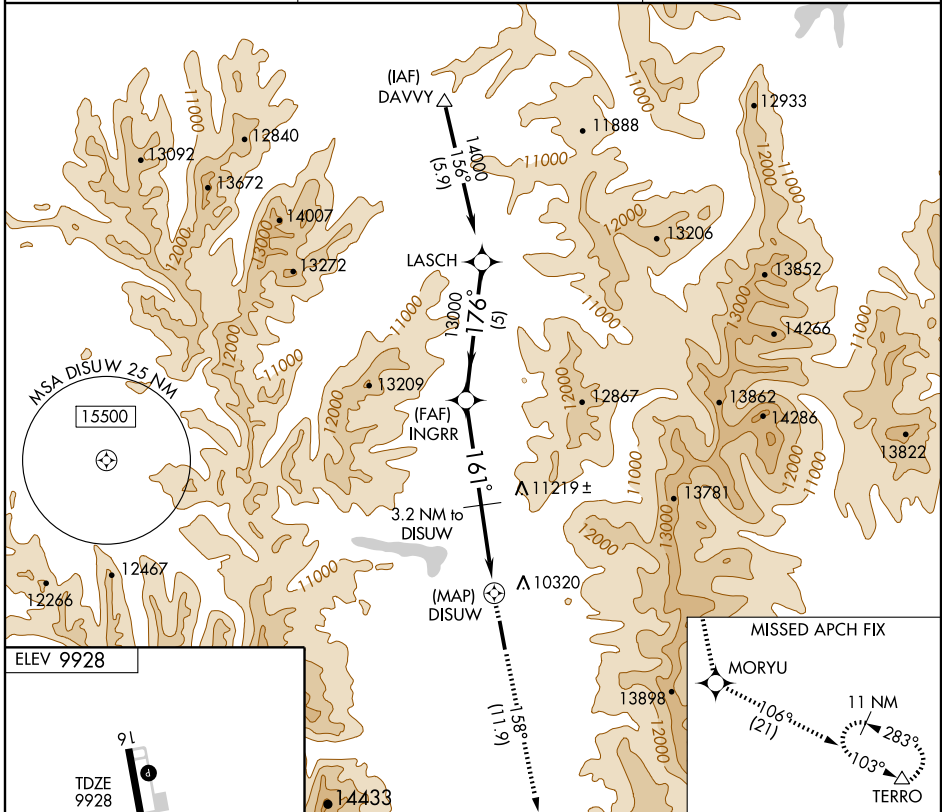
GPS RWY 16

LEADVILLE/LAKE COUNTY (LXV)

NA

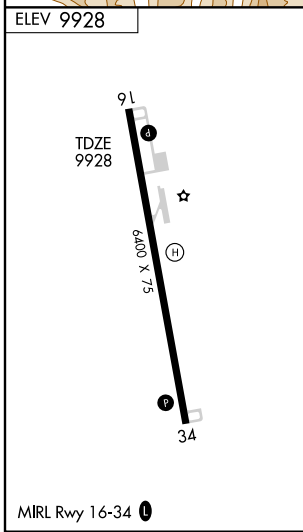
MISSED APPROACH: Climb to 16000 via 158° course to MORYU WP, then via 106° course to TERRO WP and hold.

ASOS 118.375	DENVER CENTER 119.85 363.15	UNICOM 122.8 (CTAF)
------------------------	---------------------------------------	-------------------------------



SW-1, 11 MAR 2010 to 08 APR 2010

SW-1, 11 MAR 2010 to 08 APR 2010



LASCH		INGRR		DISUW	
VGSIs and descent angles not coincident.					
14000		13000		11540	
176°		161°		106°	
5 NM		3.8 NM		3.2 NM	
CATEGORY		CATEGORY		CATEGORY	
S-16		S-16		S-16	
CIRCLING		CIRCLING		CIRCLING	

LEADVILLE, COLORADO
Orig 09127

39°13'N - 106°19'W

LEADVILLE/ LAKE COUNTY (LXV)

GPS RWY 16