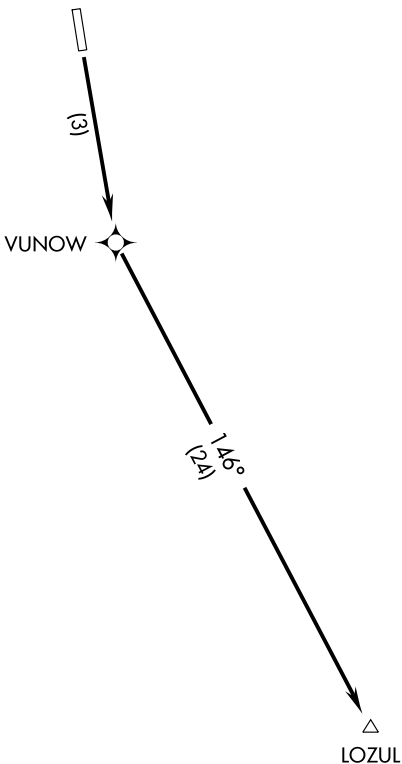


# LOZUL TWO DEPARTURE (RNAV) (OBSTACLE)

DENVER CENTER  
119.85 363.15



- NOTE: GPS required.
- NOTE: RNAV 1.
- NOTE: RADAR required.

### TAKE-OFF MINIMUMS

Rwy 16: Standard with minimum climb of 322' per NM to 14300.  
 Rwy 34: NA, ATC.

### TAKE-OFF OBSTACLE NOTE

Multiple trees beginning 47' from DER, 453' left of centerline, up to 100' AGL/10079' MSL.

NOTE: Chart not to scale.



### DEPARTURE ROUTE DESCRIPTION

TAKE-OFF RUNWAY 16: Climb to 16200' direct VUNOW and via 146° track to LOZUL.  
Then via assigned route.

SW-1, 19 NOV 2009 to 17 DEC 2009

SW-1, 19 NOV 2009 to 17 DEC 2009