

WILMINGTON, OHIO

AL-9153 (FAA)

RNAV (GPS) RWY 21

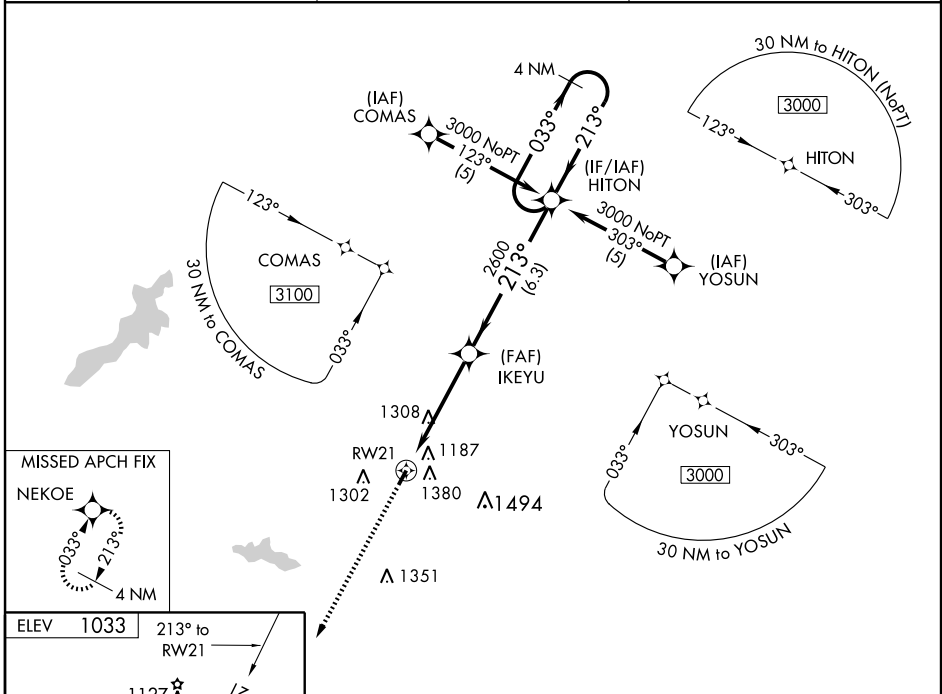
WILMINGTON/CLINTON FIELD (I66)

WAAS CH 99608 W21A	APP CRS 213°	Rwy Idg TDZE Apt Elev	3579 1033 1033
--	------------------------	-----------------------------	---

Baro-VNAV NA when using Wilmington/Airborne Airpark altimeter setting.
 For uncompensated Baro-VNAV systems, LNAV/VNAV NA below -17°C (2°F) or above 54°C (130°F). DME/DME RNP -0.3 NA. When local altimeter setting not received, use Wilmington/Airborne Airpark altimeter setting and increase all DA/MDA 20 feet. Visibility reduction by helicopters NA.

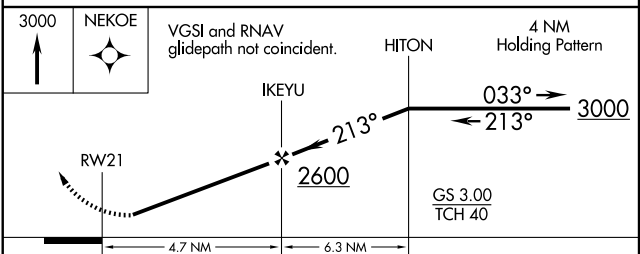
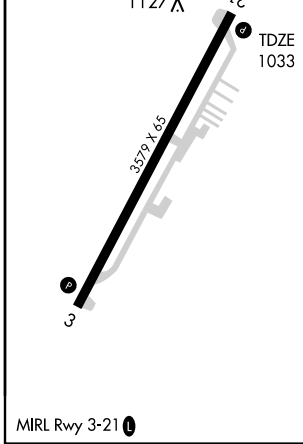
MISSED APPROACH: Climb to 3000 direct NEKOE and hold.

AWOS-3 124.175	DAYTON APP CON 118.85 127.225	126.5 327.1	UNICOM 123.0 (CTAF) 0
--------------------------	---	------------------------------	---------------------------------



EC-2, 11 MAR 2010 to 08 APR 2010

EC-2, 11 MAR 2010 to 08 APR 2010



CATEGORY	A	B	C	D
LPV DA	1491-1 ¾	458 (500-1 ¾)		NA
LNAV/VNAV DA	1589-2	556 (600-2)		NA
LNAV MDA	1640-1 607 (700-1)	1640-1 ¾ 607 (700-1 ¾)		NA
CIRCLING	1740-1 707 (800-1)	1740-2 707 (800-2)		NA

WILMINGTON, OHIO
Amdt 1 09295

39°30'N - 83°52'W

WILMINGTON/CLINTON FIELD (I66) RNAV (GPS) RWY 21