

GEORGETOWN, KENTUCKY

AL-9191 (FAA)

RNAV (GPS) RWY 21

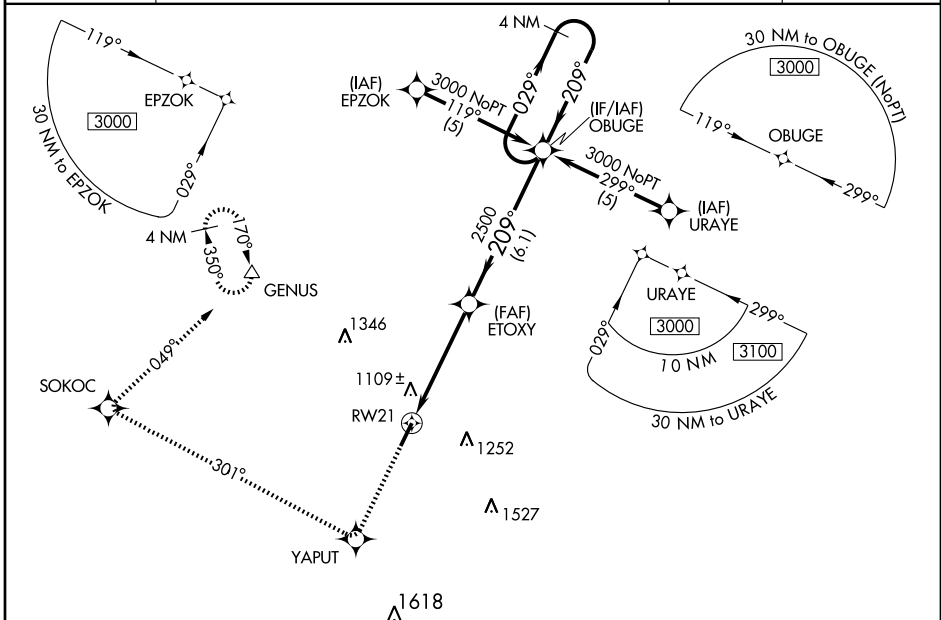
GEORGETOWN SCOTT COUNTY-MARSHALL FIELD (27K)

WAAS CH 48909 W21A	APP CRS 209°	Rwy Idg TDZE Apt Elev	5498 947 947
--	------------------------	-----------------------------	---

NA For uncompensated Baro-VNAV systems, LNAV/VNAV NA below -16°C (4°F) or above 46°C (114°F). DME/DME RNP-0.3 NA. When local altimeter setting not received, use Lexington altimeter setting and increase LPV DA to 1235, LNAV/VNAV DA to 1459, and all MDA 40 feet; increase LNAV Cat. D visibility ¼ mile. Baro-VNAV and VDP NA when using Lexington altimeter setting.

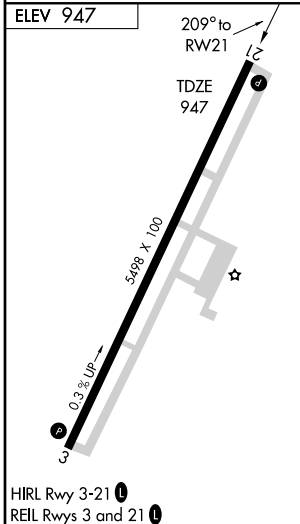
MISSED APPROACH: Climb to 3000 direct YAPUT and right turn via 301° track to SOKOC and right turn via 049° track to GENUS and hold.

AWOS-3 119.975	LEXINGTON APP CON 120.15 259.3 (040° - 220°) 120.75 298.9 (221° - 039°)	CLNC DEL 127.425	UNICOM 123.0 (CTAF) 0
--------------------------	---	----------------------------	---------------------------------



SE-1, 19 NOV 2009 to 17 DEC 2009

SE-1, 19 NOV 2009 to 17 DEC 2009



3000	YAPUT	SOKOC	GENUS	4 NM Holding Pattern
↑	☆	☆	△	
	301° TRK	049° TRK		
* LNAV only		OBUGE		
* 1.2 NM to RWY 21		ETOXY		
RWY 21		2500		
1.2 NM		3.5 NM		6.1 NM
CATEGORY	A	B	C	D
LPV DA	1197-1 250 (300-1)			
LNAV/VNAV DA	1421-1¾ 474 (500-1¾)			
LNAV MDA	1360-1	413 (500-1)	1360-1¼	413 (500-1¼)
CIRCLING	1420-1	473 (500-1)	1420-1½	1560-2 613 (700-2)
			473 (500-1½)	

GEORGETOWN, KENTUCKY
Amdt 1 08325

GEORGETOWN SCOTT COUNTY-MARSHALL FIELD (27K)
38° 14'N- 84° 26'W

RNAV (GPS) RWY 21