

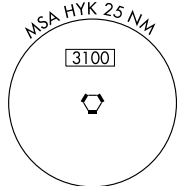
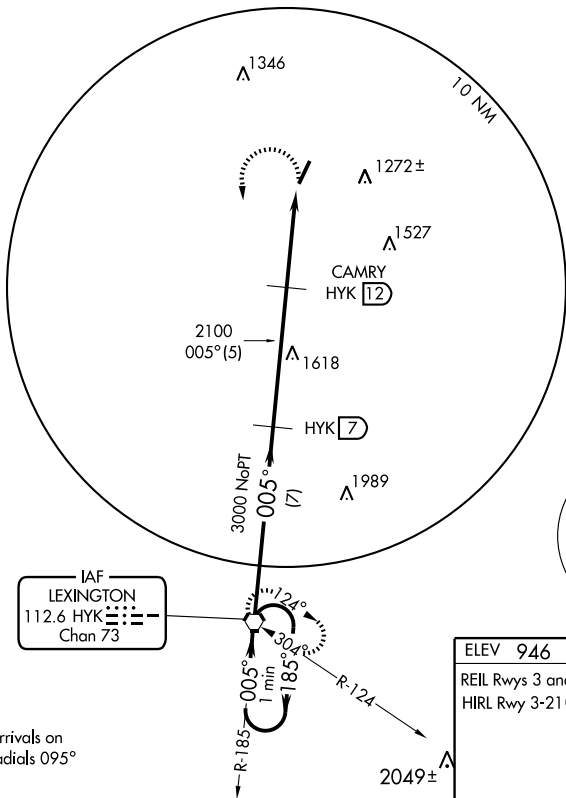
VORTAC HYK 112.6 Chan 73	APP CRS 005°	Rwy ldg TDZE Apt Elev	5498 943 946
---------------------------------------	------------------------	-----------------------------	---

VOR/DME RWY 3

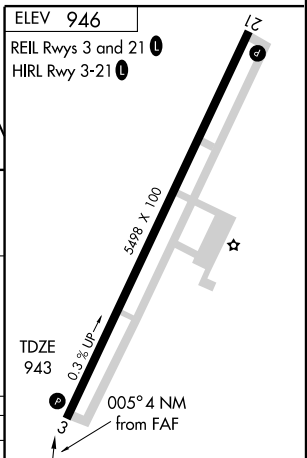
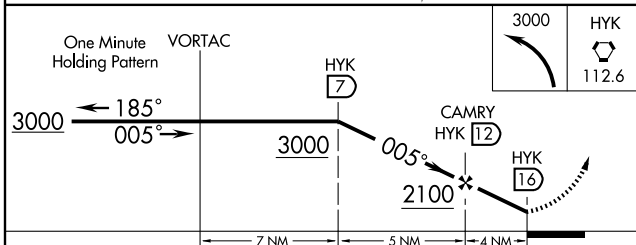
GEORGETOWN SCOTT COUNTY-MARSHALL FIELD (27K)

▲ NA	MISSED APPROACH: Climbing left turn to 3000 direct HYK VORTAC and hold.		
-------------	---	--	--

AWOS-3 119.975	LEXINGTON APP CON 120.15 259.3 (040°-220°) 120.75 298.9 (221°-039°)	CLNC DEL 127.425	UNICOM 123.0 (CTAF) 0
--------------------------	---	----------------------------	---------------------------------



No procedure turn for arrivals on HYK VORTAC airway radials 095° clockwise 275°



CATEGORY	A	B	C	D
S-3	1520-1 577 (600-1)		1520-1½ 577 (600-1½)	1520-1¾ 577 (600-1¾)
CIRCLING	1520-1 574 (600-1)		1520-1½ 574 (600-1½)	1660-2¼ 714 (800-2¼)

Knots	60	90	120	150	180
Min:Sec					

VOR/DME RWY 3

SE-1, 19 NOV 2009 to 17 DEC 2009

SE-1, 19 NOV 2009 to 17 DEC 2009