

RNAV (GPS) RWY 3

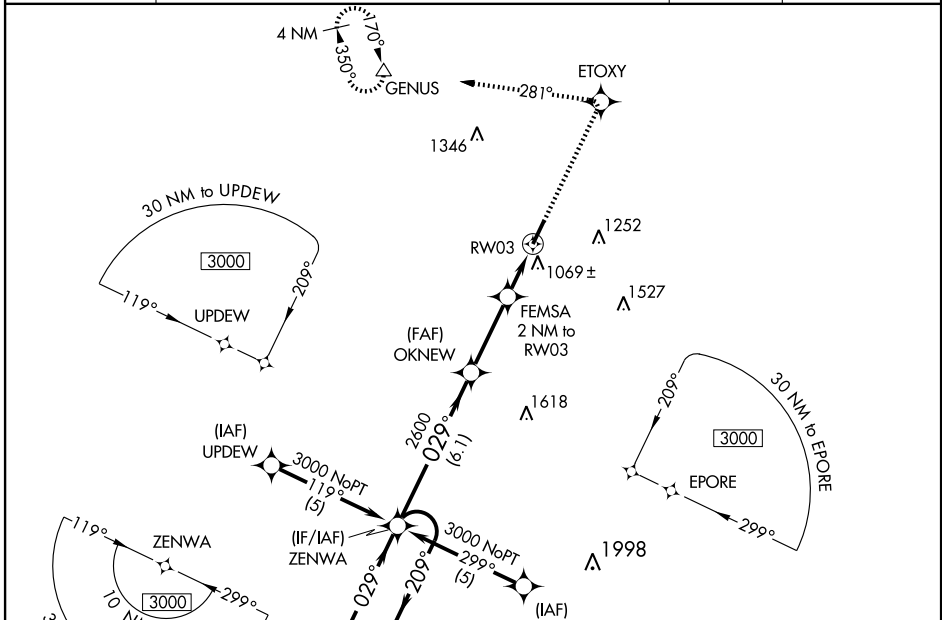
GEORGETOWN SCOTT COUNTY-MARSHALL FIELD (27K)

WAAS CH 56309	APP CRS 029°	Rwy ldg 5498 TDZE 940 Apt Elev 947
-------------------------	------------------------	---

NA For uncompensated Baro-VNAV systems, LNAV/VNAV NA below -16°C (4°F) or above 47°C (116°F). DME/DME RNP-0.3 NA. When local altimeter setting not received, use Lexington altimeter setting and increase LPV DA to 1228, LNAV/VNAV DA to 1413, and all MDA 40 feet; increase LNAV/VNAV visibility all Cats. and LNAV Cat. C visibility ¼ mile. Baro-VNAV and VDP NA when using Lexington altimeter setting.

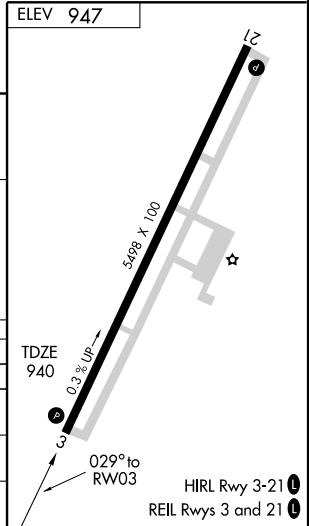
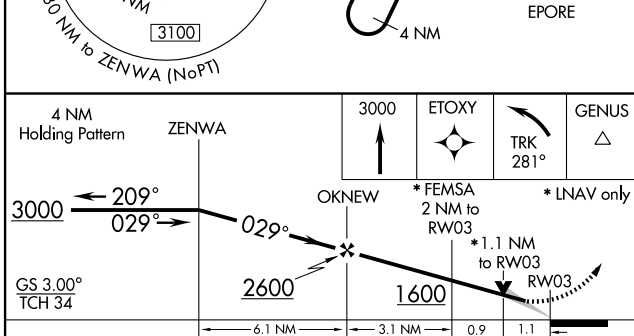
MISSED APPROACH: Climb to 3000 direct ETOXY and left turn via 281° track to GENUS and hold.

AWOS-3 119.975	LEXINGTON APP CON 120.15 259.3 (040° - 220°) 120.75 298.9 (221° - 039°)	CLNC DEL 127.425	UNICOM 123.0 (CTAF) 0
--------------------------	---	----------------------------	---------------------------------



SE-1, 19 NOV 2009 to 17 DEC 2009

SE-1, 19 NOV 2009 to 17 DEC 2009



CATEGORY	A	B	C	D
LPV DA	1190-1 250 (300-1)			
LNAV/ VNAV	1375-1½ 435 (500-1½)			
LNAV MDA	1320-1 380 (400-1)		1320-1¼ 380 (400-1¼)	
CIRCLING	1420-1 473 (500-1)	1420-1½ 473 (500-1½)	1560-2 613 (700-2)	1560-2 613 (700-2)

RNAV (GPS) RWY 3