

**RNAV (GPS)-A**  
ARCO-BUTTE COUNTY (AOC)

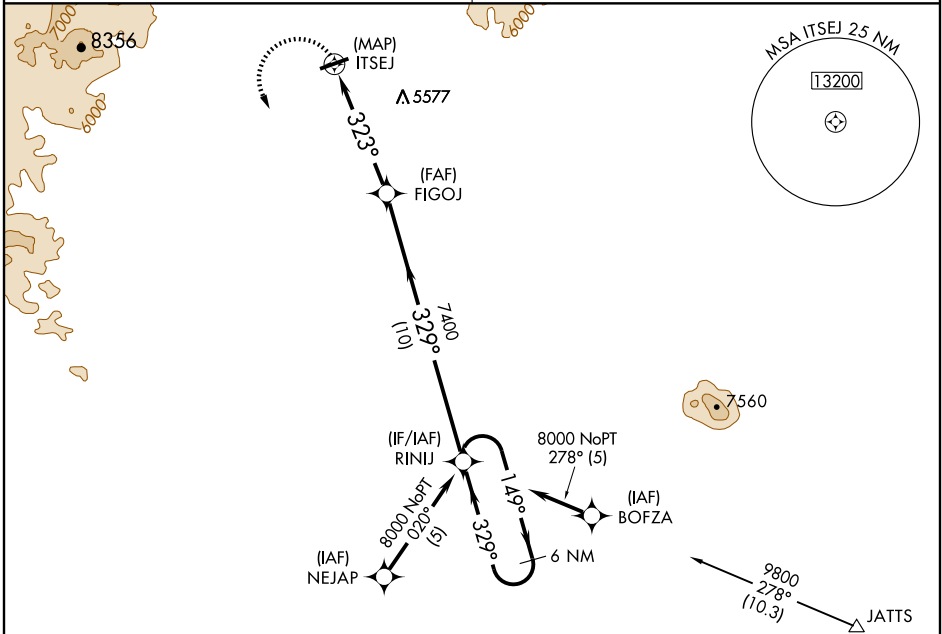
APP CRS <b>323°</b>	Rwy Idg TDZE Apt Elev	<b>N/A</b> <b>N/A</b> <b>5332</b>
------------------------	-----------------------------	---

**▽** GPS or RNP-0.3 required.  
**△ NA** DME/DME RNP-0.3 NA.  
If local altimeter setting not received, use Pocatello Rgnl altimeter setting and increase all MDAs 600 feet.

MISSED APPROACH: Climbing left turn to 8000 direct RINIJ and hold.

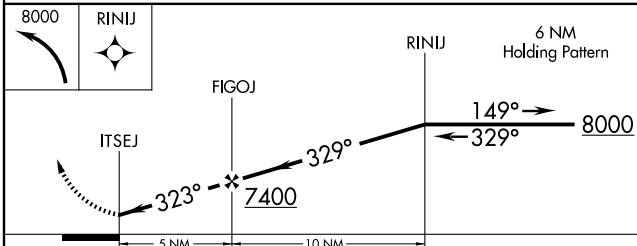
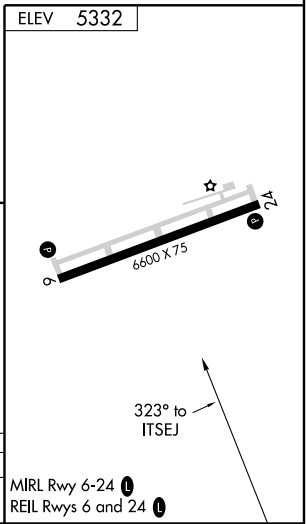
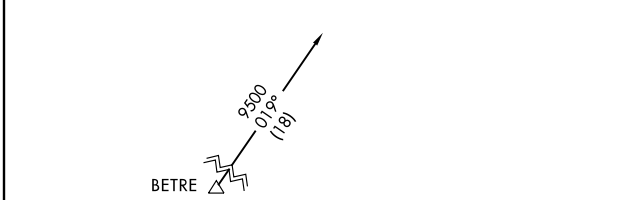
SALT LAKE CENTER  
**128.35 239.25**

UNICOM  
**122.8 (CTAF)**



NW-1, 11 MAR 2010 to 08 APR 2010

NW-1, 11 MAR 2010 to 08 APR 2010



CATEGORY	A	B	C	D
CIRCLING	5920-1	588 (600-1)	5920-1½ 588 (600-1½)	5920-2 588 (600-2)