

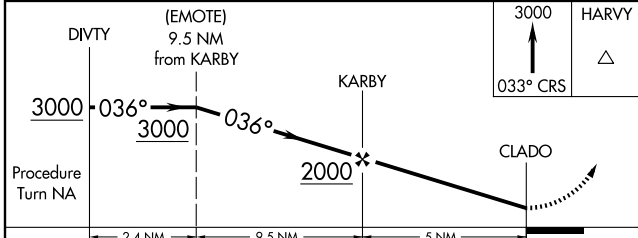
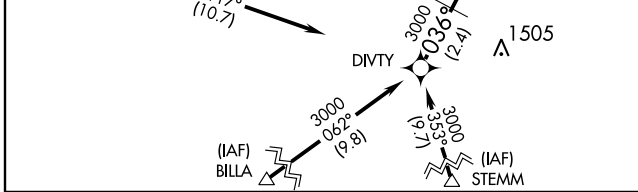
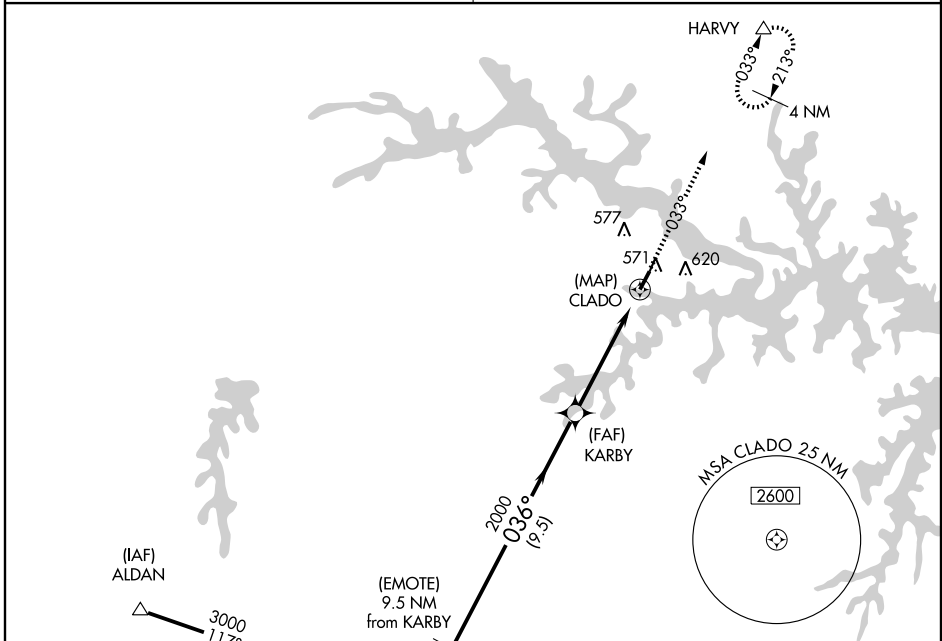
GPS RWY 4

CLARKSVILLE/LAKE COUNTRY REGIONAL (W63)

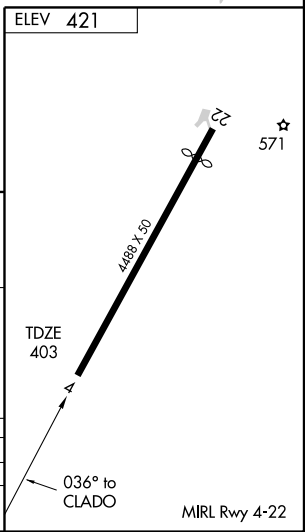
APP CRS 036°	Rwy Idg 4488
	TDZE 403
	Apt Elev 421

<p>▼ Use Mecklenburg-Brunswick Rgnl, VA altimeter setting.</p> <p>▲ NA Procedure not authorized at night.</p>	<p>MISSED APPROACH: Climb to 3000 via 033° course to HARVY WP and hold.</p>
---	---

<p>WASHINGTON CENTER 118.75 377.1</p>	<p>CTAF 122.9</p>
--	--------------------------



Procedure Turn NA	2.4 NM	9.5 NM	5 NM	
CATEGORY	A	B	C	D
S-4	820-1 417 (400-1)		820-1¼ 417 (400-1¼)	
CIRCLING	1000-1 579 (600-1)	1040-1 619 (700-1)	1040-1¾ 619 (700-1¾)	1040-2 619 (700-2)



NE-3, 19 NOV 2009 to 17 DEC 2009

NE-3, 19 NOV 2009 to 17 DEC 2009

GPS RWY 4

MIRL Rwy 4-22