

CLARKSVILLE, VIRGINIA

AL-9200 (FAA)

VORTAC SBV <b>110.4</b> Chan <b>41</b>	APP CRS <b>107°</b>	Rwy Idg TDZE Apt Elev	<b>N/A</b> <b>N/A</b> <b>421</b>
--	------------------------	-----------------------------	--

VOR/DME-A

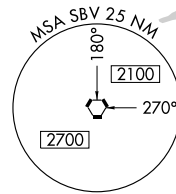
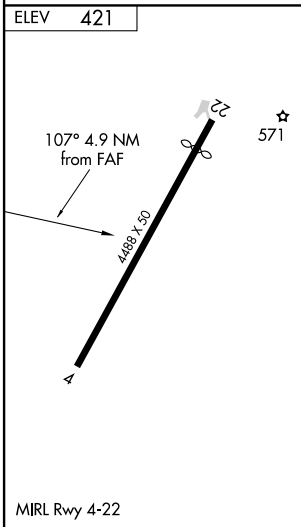
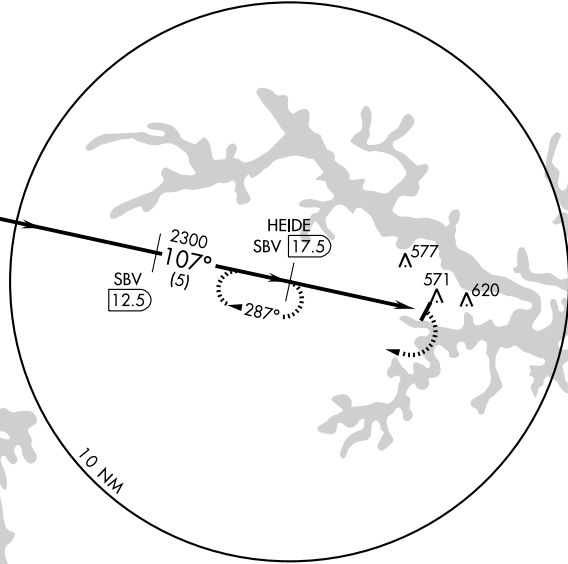
CLARKSVILLE/LAKE COUNTRY REGIONAL (W63)

<p>▼ Use Mecklenburg-Brunswick Rgnl, VA altimeter setting.</p> <p>▲ NA</p>	<p>MISSED APPROACH: Climbing right turn to 2300 via SBV R-107 to HEIDE/ 17.5 DME and hold.</p>
<p>WASHINGTON CENTER <b>118.75 377.1</b></p>	<p>CTAF <b>122.9</b></p>

NE-3, 19 NOV 2009 to 17 DEC 2009

NE-3, 19 NOV 2009 to 17 DEC 2009

IAF  
SOUTH BOSTON  
110.4 SBV  
Chan 41



VORTAC	3000	SBV (12.5)	HEIDE SBV (17.5)	2300 HEIDE SBV (17.5)
	Procedure Turn NA	2500	2300	SBV (22.5)
	12.5 NM		5 NM	4.9 NM
CATEGORY	A	B	C	D
CIRCLING	1000-1 579 (600-1)	1040-1 619 (700-1)	1040-1¾ 619 (700-1¾)	1040-2 619 (700-2)

CLARKSVILLE, VIRGINIA  
Orig 09295

CLARKSVILLE/LAKE COUNTRY REGIONAL (W63)  
36°36'N - 78°34'W  
VOR/DME-A