

VOR/DME TTT <b>113.1</b> Chan <b>78</b>	APP CRS <b>356°</b>	Rwy Idg TDZE <b>589</b> Apt Elev <b>589</b>
---	------------------------	---

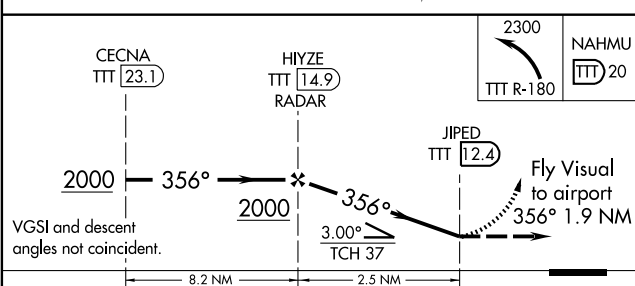
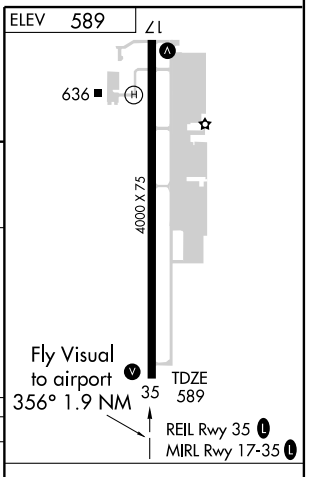
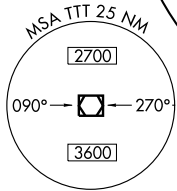
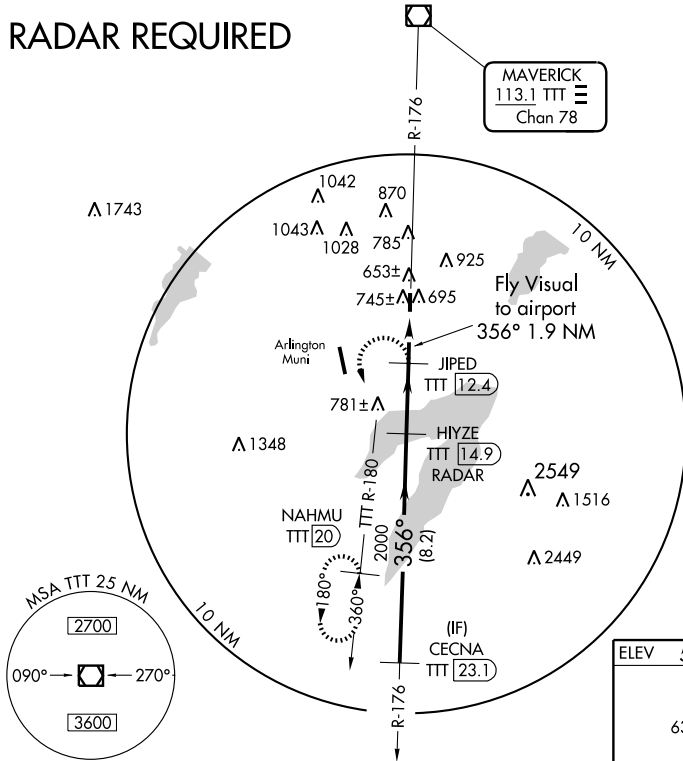
# VOR/DME RWY 35

GRAND PRAIRIE MUNI (GPM)

**▼** If local altimeter setting not received, use Arlington Muni altimeter setting. **▲** MISSED APPROACH: Climbing left turn to 2300 via TTT R-180 to NAHMU/20 DME and hold.

AWOS-3 <b>118.475</b>	REGIONAL APP CON <b>135.975 379.9</b>	GRAND PRAIRIE TOWER* <b>128.55</b> (CTAF) <b>0</b>	GND CON <b>121.15</b>	UNICOM <b>122.8</b>
--------------------------	--	---	--------------------------	------------------------

## RADAR REQUIRED



CATEGORY	A	B	C	D		
S-35	1040-2¼	451 (500-2¼)	NA			
CIRCLING	NA					
	Knots	60	90	120	150	180
	Min:Sec					

SC-2, 11 MAR 2010 to 08 APR 2010

SC-2, 11 MAR 2010 to 08 APR 2010