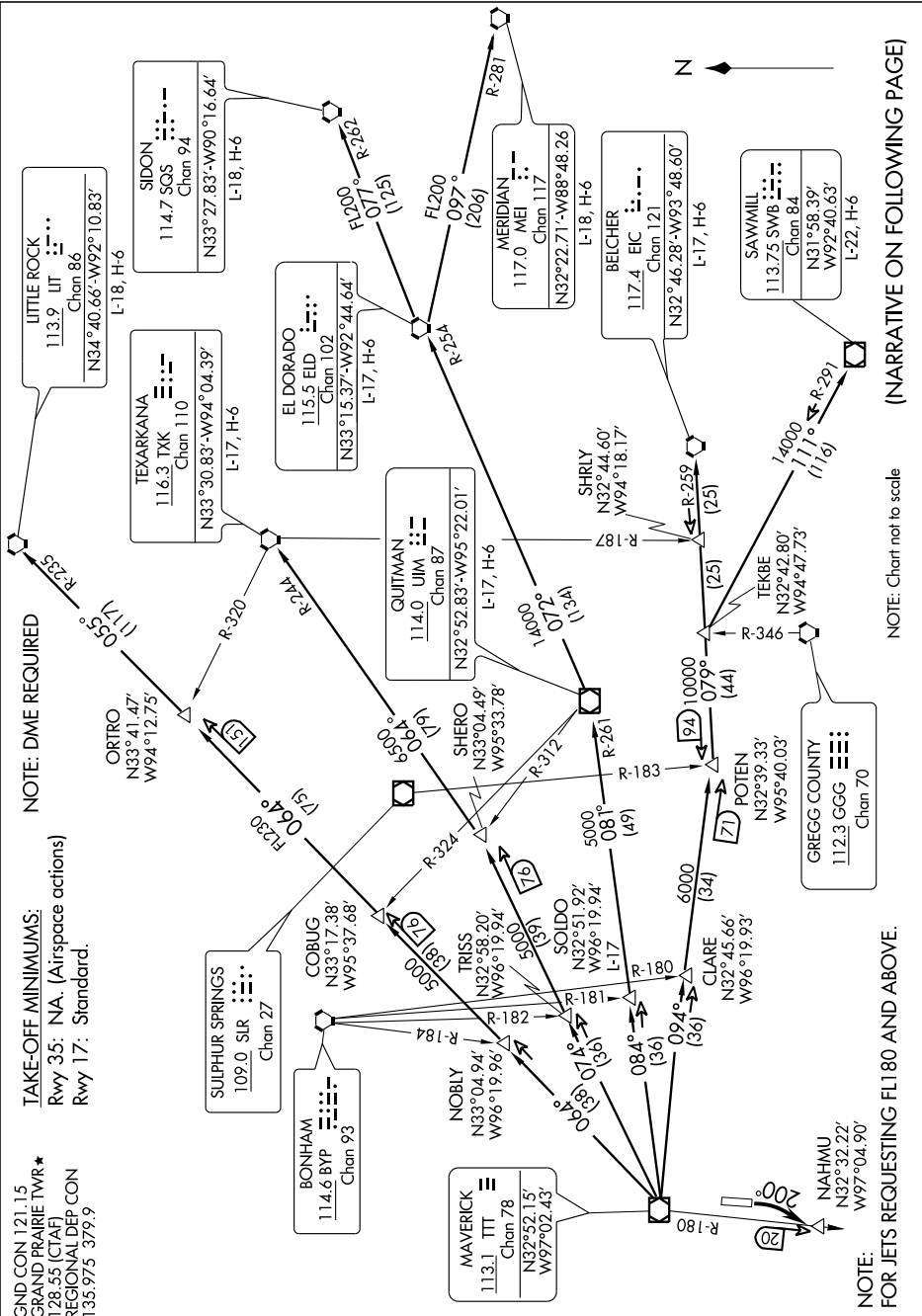


SC-2, 19 NOV 2009 to 17 DEC 2009

GND CON 121.15
GRAND PRAIRIE TWR*
128.55 (CTAF)
REGIONAL DEP CON
135.975-379.9

TAKE-OFF MINIMUMS:
Rwy 35: NA. (Airspace actions)
Rwy 17: Standard.

NOTE: DME REQUIRED



(NARRATIVE ON FOLLOWING PAGE)

NOTE: Chart not to scale

SC-2, 19 NOV 2009 to 17 DEC 2009

NOTE:
FOR JETS REQUESTING FL180 AND ABOVE.