

VOR/DME TTT 113.1 Chan 78	APP CRS 356°	Rwy Idg TDZE Apt Elev	4000 589 589
---	------------------------	-----------------------------	---

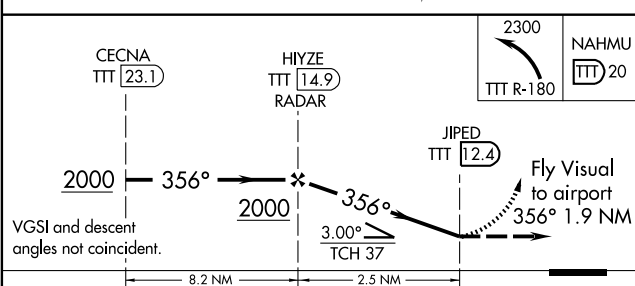
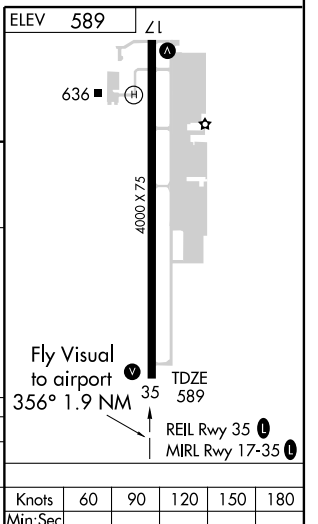
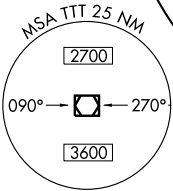
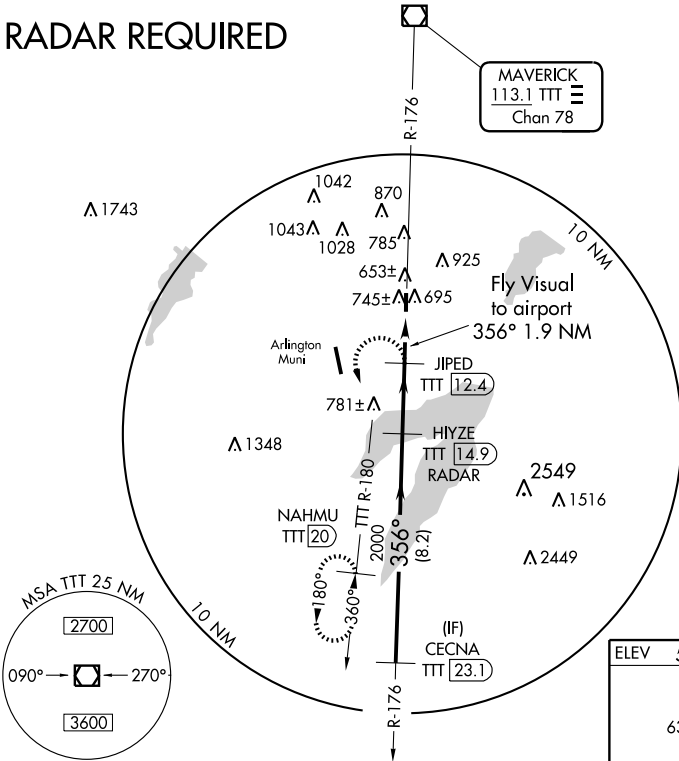
VOR/DME RWY 35

GRAND PRAIRIE MUNI (GPM)

▽ If local altimeter setting not received, use Arlington Muni altimeter setting. **▲** MISSED APPROACH: Climbing left turn to 2300 via TTT R-180 to NAHMU/20 DME and hold.

AWOS-3 118.475	REGIONAL APP CON 135.975 379.9	GRAND PRAIRIE TOWER* 128.55 (CTAF) 0	GND CON 121.15	UNICOM 122.8
--------------------------	--	---	--------------------------	------------------------

RADAR REQUIRED



CATEGORY	A	B	C	D
S-35	1040-2¼	451 (500-2¼)		NA
CIRCLING	NA			

Knots	60	90	120	150	180
Min:Sec					

SC-2, 19 NOV 2009 to 17 DEC 2009

SC-2, 19 NOV 2009 to 17 DEC 2009