

WEEDSPORT, NEW YORK

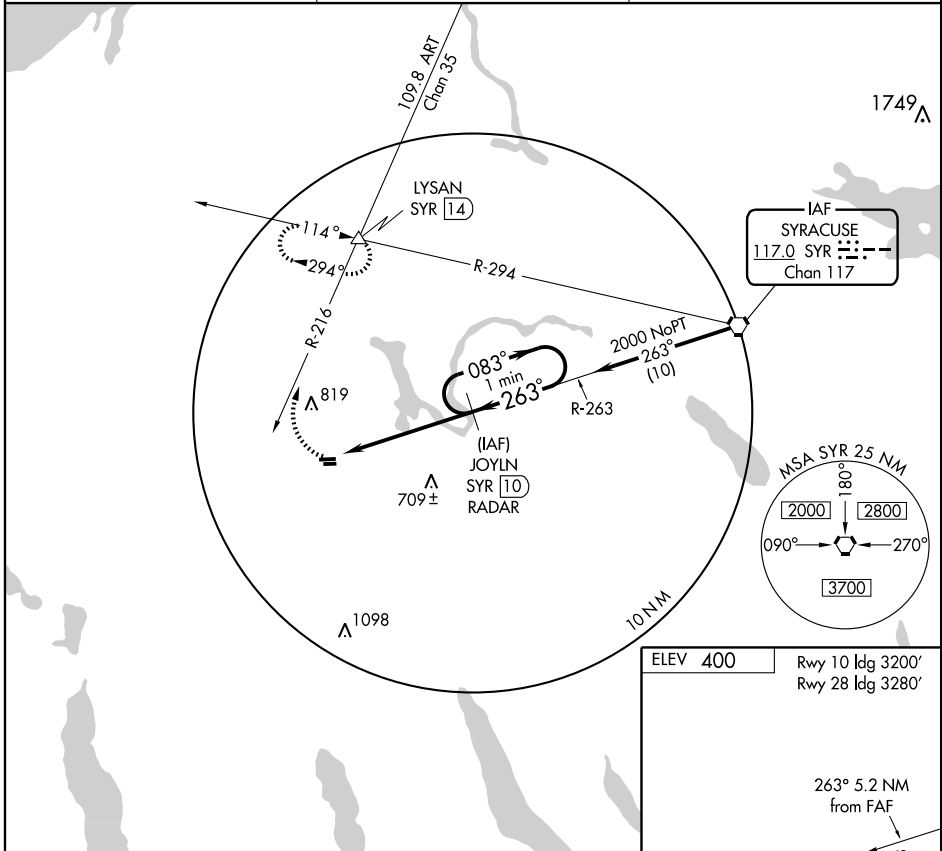
AL-9225 (FAA)

VORTAC SYR <b>117.0</b> Chan <b>117</b>	APP CRS <b>263°</b>	Rwy Idg TDZE Apt Elev	<b>N/A</b> <b>N/A</b> <b>400</b>
---	------------------------	-----------------------------	--

**VOR-A**  
WEEDSPORT/WHITFORDS (B16)

<b>▽</b> Use Syracuse Hancock Intl altimeter setting.	<b>▲</b> NA	MISSED APPROACH: Climbing right turn to 3000 via heading 034° and ART R-216 to LYSAN Int and hold.
---	-------------	--

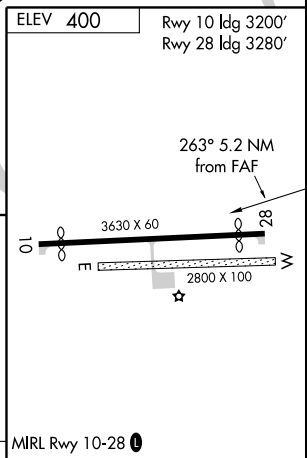
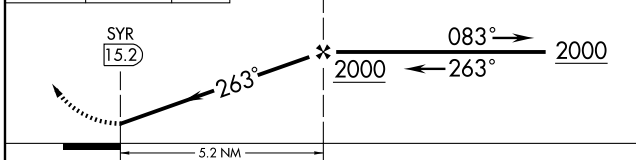
SYRACUSE APP CON <b>134.275 279.6</b>	UNICOM <b>122.8 (CTAF)</b>	<b>122.70</b>
--	-------------------------------	---------------



NE-2, 11 MAR 2010 to 08 APR 2010

NE-2, 11 MAR 2010 to 08 APR 2010

3000 HDG 034°	ART R-216 109.8	LYSAN ▲	JOYLN SYR 10 RADAR	One Minute Holding Pattern
------------------	--------------------	------------	-----------------------	-------------------------------



CATEGORY	A	B	C	D	MIRL Rwy 10-28	
CIRCLING	1100-1	700 (700-1)	NA		FAF to MAP 5.2 NM	
	Knots	60	90	120	150	180
	Min:Sec	5:12	3:28	2:36	2:05	1:44

WEEDSPORT, NEW YORK  
Orig-B 07298

43°05'N - 76°32'W

WEEDSPORT/WHITFORDS (B16)  
**VOR-A**