

WEEDSPORT, NEW YORK

AL-9225 (FAA)

RNAV (GPS) RWY 10

WEEDSPORT/ WHITFORDS (B16)

APP CRS 099°	Rwy ldg 3200 TDZE 400 Apt Elev 400
------------------------	---

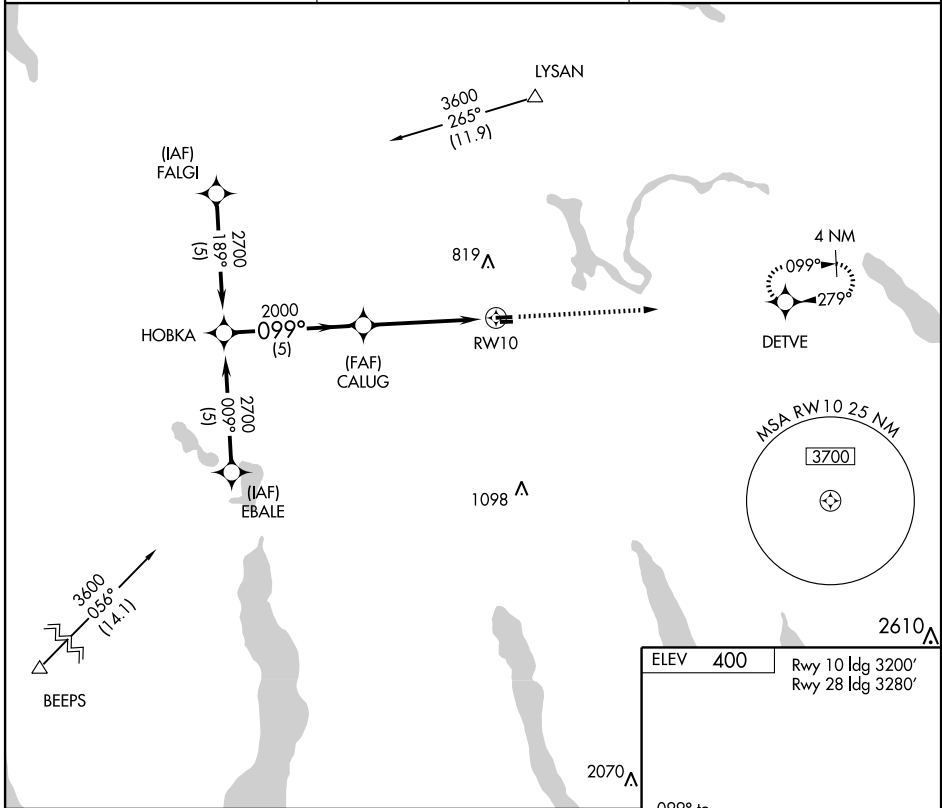
▽ Use Syracuse altimeter setting.
△ NA GPS or RNP-0.3 required.
DME/DME RNP-0.3 NA.

MISSED APPROACH: Climb to 3000 direct DETVE WP and hold.

SYRACUSE APP CON
134.275 279.6

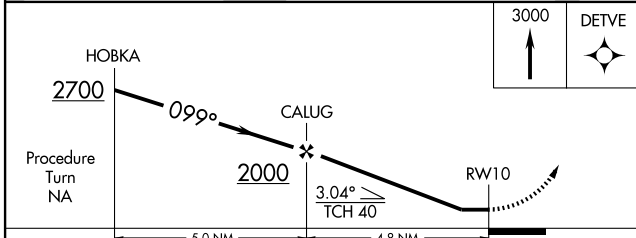
UNICOM
122.8 (CTAF)

122.70



NE-2, 11 MAR 2010 to 08 APR 2010

NE-2, 11 MAR 2010 to 08 APR 2010



ELEV 400	Rwy 10 ldg 3200'	Rwy 28 ldg 3280'
----------	------------------	------------------

3000 DETVE

099° to RWY 10

3630 X 60

2800 X 100

TDZE 400

MIRL Rwy 10-28

CATEGORY	A	B	C	D
LNVA MDA	1020-1	620 (700-1)		NA
CIRCLING	1020-1 620 (700-1)	1060-1 660 (700-1)		NA

WEEDSPORT, NEW YORK
Orig 07298

43°05'N - 76°32'W

RNAV (GPS) RWY 10