

# RNAV (GPS) RWY 18

MOSBY/MIDWEST NATIONAL AIR CENTER (GPH)

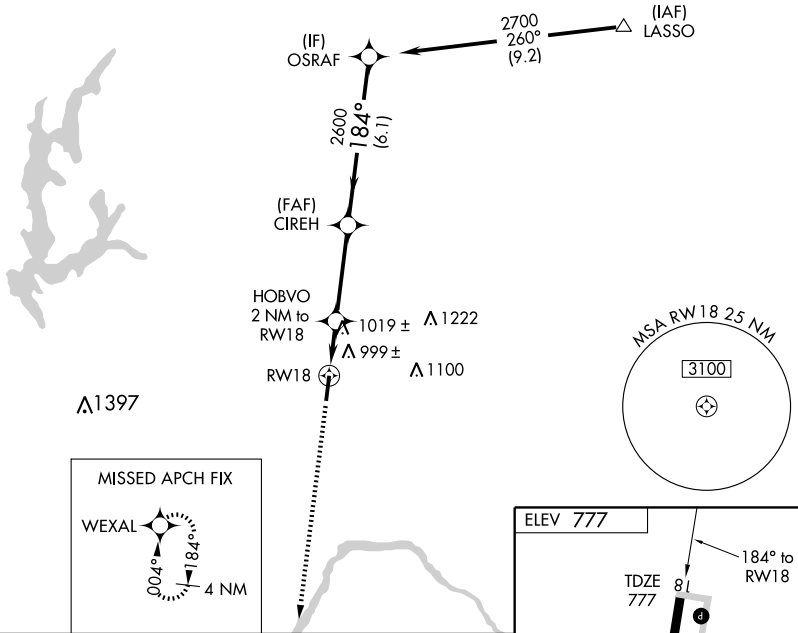
|  |                        |   |             |
|--|------------------------|---|-------------|
| WAAS<br>CH <b>70323</b><br><b>W18A</b> | APP CRS<br><b>184°</b> | Rwy Idg<br>TDZE <b>777</b><br>Apt Elev <b>777</b> | <b>5504</b> |
|--|------------------------|---|-------------|

**⚠** For uncompensated Baro-VNAV systems, LNAV/VNAV NA below -1.6°C (4°F) or above 54°C (130°F). DME/DME RNP-0.3 NA.  
**⚠** Baro-VNAV and VDP NA when using Kansas City Intl altimeter setting. Obtain local altimeter setting on CTAF; when not received, use Kansas City Intl altimeter setting and increase all DAs 79 feet and all LPV and LNAV/VNAV visibilities ¼ mile; increase all MDAs 80 feet and circling visibility Cat C ¼ mile.

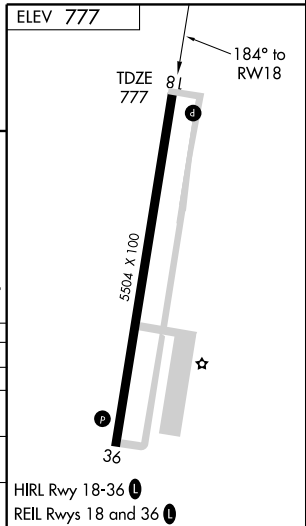
MISSED APPROACH: Climb to 2700 direct WEXAL and hold.

|                                     |                          |  |
|-------------------------------------|--------------------------|--|
| KANSAS CITY APP CON<br><b>118.4</b> | CLNC DEL<br><b>118.2</b> | UNICOM<br><b>122.7</b> (CTAF) <b>0</b> |
|-------------------------------------|--------------------------|--|

Procedure NA for arrivals at LASSO via V159 southeast bound, and via V502 northeast bound.



|              |         |   |                         |                   |        |
|--------------|---------|---|-------------------------|-------------------|--------|
| 2700         | WEXAL   | VGSI and RNAV glidepath not coincident. |                         | OSRAF             |        |
| ↑            | ⬠       | HOBVO<br>2 NM to RW18                   | CIREH                   | 2700              |        |
| *LNAV only   |         | *1.2 NM to RW18                         |                         | Procedure Turn NA |        |
|              |         |   |                         | GS 3.00°          |        |
|              |         |   |                         | TCH 51            |        |
|              |         | 1.2 NM                                  | 0.8 NM                  | 3.5 NM            | 6.1 NM |
| CATEGORY     | A       | B                                       | C                       | D                 |        |
| LPV DA       | 1189-1½ | 412 (500-1½)                            |                         | NA                |        |
| LNAV/VNAV DA | 1324-2  | 547 (600-2)                             |                         | NA                |        |
| LNAV MDA     | 1280-1  | 503 (600-1)                             | 1280-1½<br>503 (600-1½) | NA                |        |
| CIRCLING     | 1300-1  | 523 (600-1)                             | 1320-1½<br>543 (600-1½) | NA                |        |



NC-3, 19 NOV 2009 to 17 DEC 2009

NC-3, 19 NOV 2009 to 17 DEC 2009