

WAAS CH <b>86409</b> <b>W36A</b>	APP CRS <b>004°</b>	Rwy Idg TDZE <b>776</b> Apt Elev <b>777</b>	<b>5504</b> <b>776</b> <b>777</b>
--	------------------------	---	---

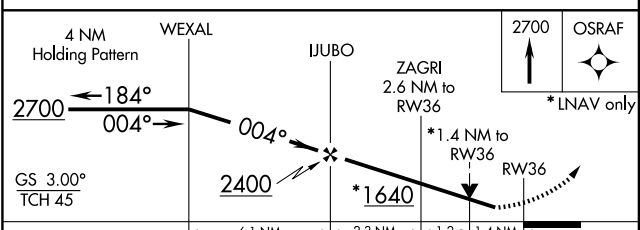
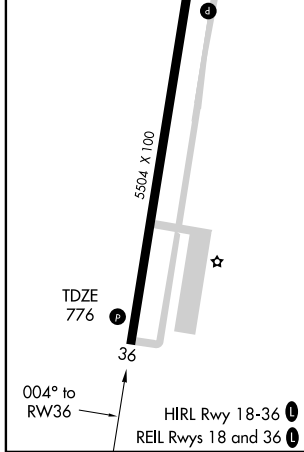
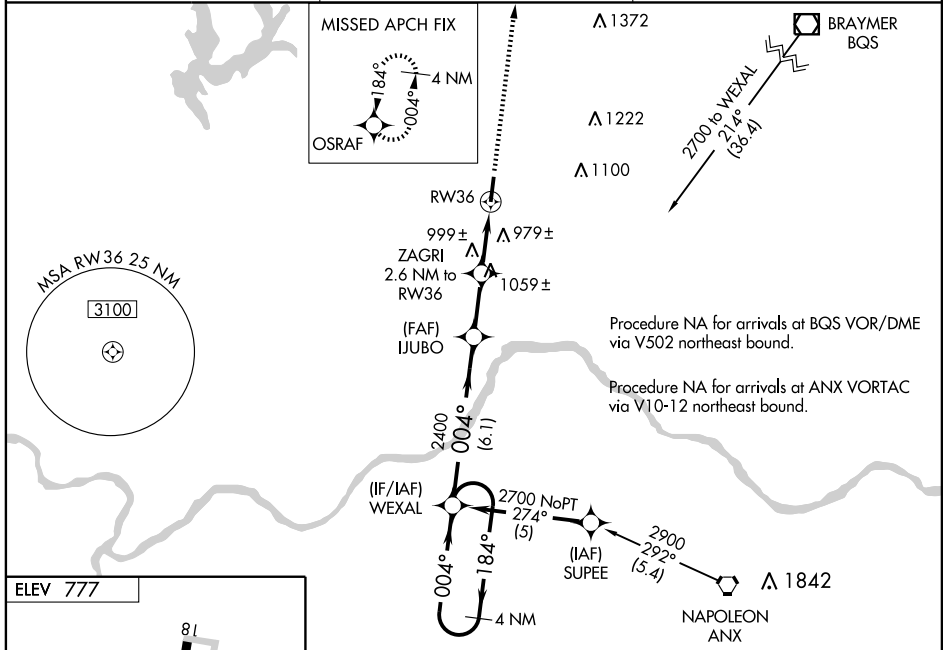
# RNAV (GPS) RWY 36

MOSBY/ MIDWEST NATIONAL AIR CENTER (GPH)

**⚠** **NA** DME/DME RNP-0.3 NA. Baro-VNAV NA when using Kansas City Intl altimeter setting. For uncompensated Baro-VNAV systems, LNAV/VNAV NA below -16°C (4°F) or above 54°C (130°F). Visibility reduction by helicopters NA. Obtain local altimeter setting on CTAF; when not received use Kansas City Intl altimeter setting and increase all DA 79 feet and all LPV and LNAV/VNAV visibilities ¼ mile; increase all MDA 80 feet and LNAV and Circling Cat C visibility ¼ mile. VDP NA when using Kansas City Intl altimeter setting.

MISSED APPROACH: Climb to 2700 direct OSRAF and hold.

KANSAS CITY APP CON <b>118.4</b>	CLNC DEL <b>118.2</b>	UNICOM <b>122.7 (CTAF)</b>
-------------------------------------	--------------------------	-------------------------------



CATEGORY	A	B	C	D
LPV DA	1105-1¼	329 (400-1¼)		NA
LNAV/ VNAV DA	1341-2	565 (600-2)		NA
LNAV MDA	1260-1	484 (500-1)	1260-1¼ 484 (500-1¼)	NA
CIRCLING	1300-1	523 (600-1)	1320-1½ 543 (600-1½)	NA

NC-3, 19 NOV 2009 to 17 DEC 2009

NC-3, 19 NOV 2009 to 17 DEC 2009