

MOSBY, MISSOURI

AL-9229 (FAA)

ILS or LOC/DME RWY 18

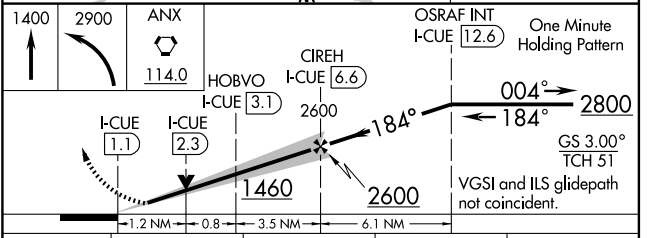
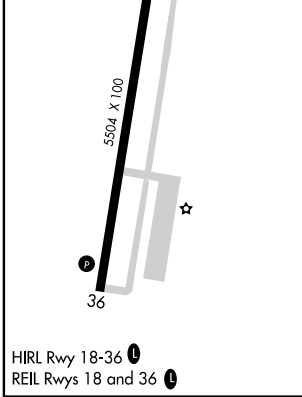
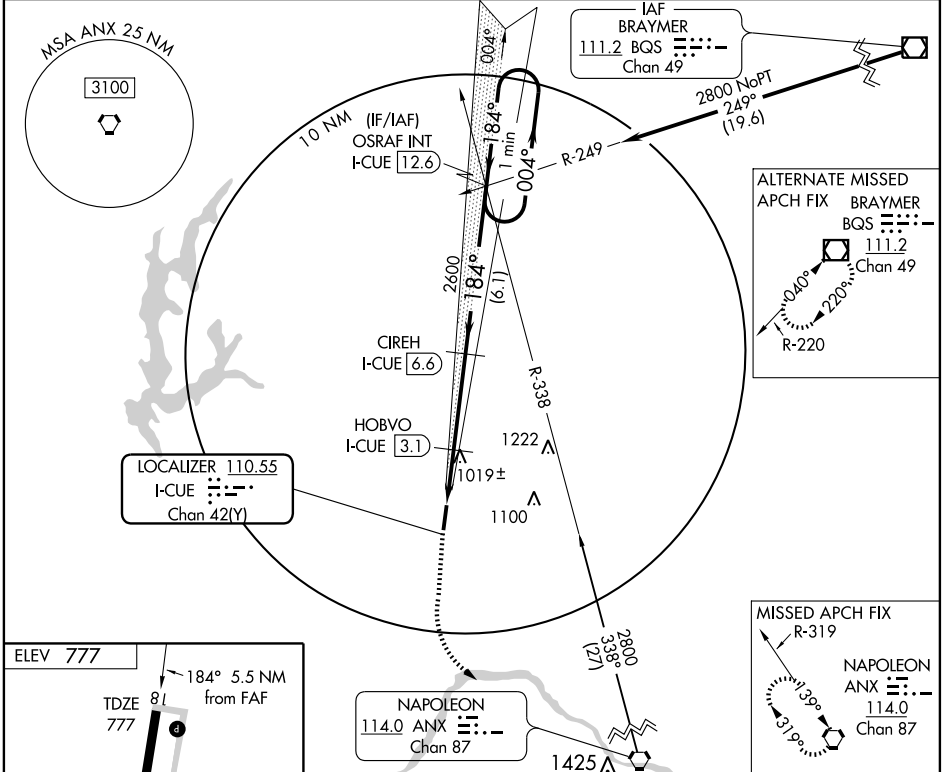
MOSBY/MIDWEST NATIONAL AIR CENTER (GPH)

LOC/DME I-CUE 110.55 Chan 42 (Y)	APP CRS 184°	Rwy Idg TDZE Apt Elev	5504 777 777
---	------------------------	-----------------------------	---

NA Obtain local altimeter setting on CTAF; when not received use Kansas City Intl altimeter setting and increase DA 79 feet and all visibilities ¼ mile; increase all MDAs 80 feet, and circling visibility Cat C ¼ mile.

MISSED APPROACH: Climb to 1400 then climbing left turn to 2900 direct ANX VORTAC and hold.

KANSAS CITY APP CON 118.4	CLNC DEL 118.2	UNICOM 122.7 (CTAF)
-------------------------------------	--------------------------	-------------------------------



CATEGORY	A	B	C	D
S-ILS 18	977-¾ 200 (200-¾)			NA
S-LOC 18	1280-1	503 (600-1)	1280-1½ 503 (600-1½)	NA
CIRCLING	1300-1	523 (600-1)	1320-1½ 543 (600-1½)	NA

MOSBY, MISSOURI
Orig-A 09071

MOSBY/MIDWEST NATIONAL AIR CENTER (GPH)
39°20'N-94°19'W
ILS or LOC/DME RWY 18

NC-3, 19 NOV 2009 to 17 DEC 2009

NC-3, 19 NOV 2009 to 17 DEC 2009