

RNAV (GPS) RWY 18

MOSBY/MIDWEST NATIONAL AIR CENTER (GPH)

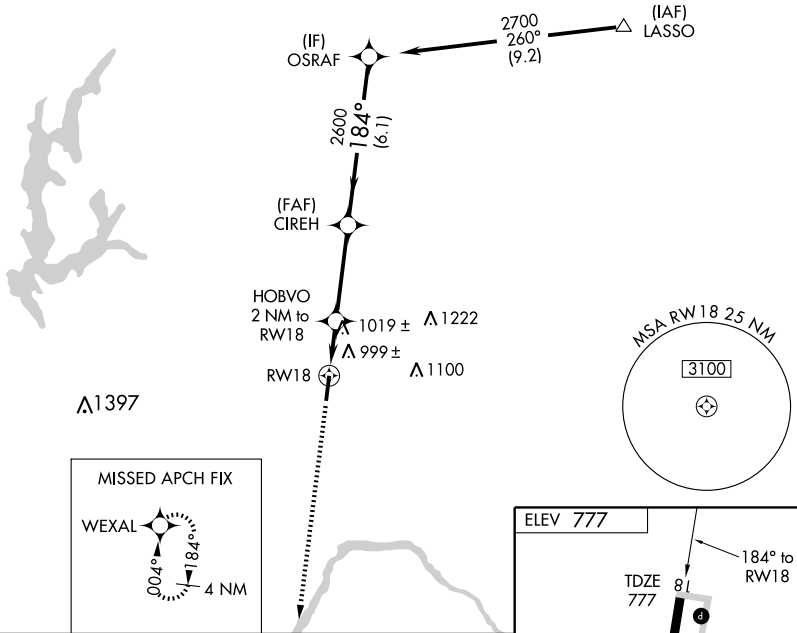
WAAS CH 70323 W18A	APP CRS 184°	Rwy Idg TDZE 777 Apt Elev 777	5504
--	------------------------	---	-------------

⚠ For uncompensated Baro-VNAV systems, LNAV/VNAV NA below -1.6°C (4°F) or above 54°C (130°F). DME/DME RNP-0.3 NA.
⚠ Baro-VNAV and VDP NA when using Kansas City Intl altimeter setting. Obtain local altimeter setting on CTAF; when not received, use Kansas City Intl altimeter setting and increase all DAs 79 feet and all LPV and LNAV/VNAV visibilities ¼ mile; increase all MDAs 80 feet and circling visibility Cat C ¼ mile.

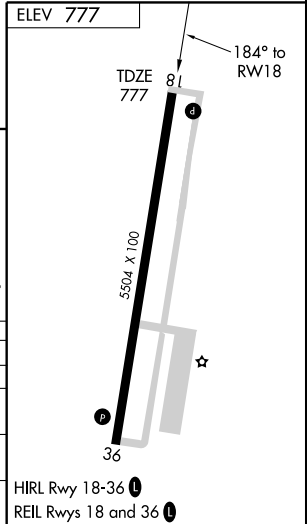
MISSED APPROACH: Climb to 2700 direct WEXAL and hold.

KANSAS CITY APP CON 118.4	CLNC DEL 118.2	UNICOM 122.7 (CTAF) 0
-------------------------------------	--------------------------	--

Procedure NA for arrivals at LASSO via V159 southeast bound, and via V502 northeast bound.



2700	WEXAL	VGSIs and RNAV glidepath not coincident.		OSRAF
↑	⬠	HOBVO 2 NM to RWY 18	CIREH	2700
*LNAV only	*1.2 NM to RWY 18	1460*	184°	Procedure Turn NA
1.2 NM	0.8 NM	3.5 NM	6.1 NM	GS 3.00° TCH 51
CATEGORY	A	B	C	D
LPV DA	1189-1½	412 (500-1½)		NA
LNAV/VNAV DA	1324-2	547 (600-2)		NA
LNAV MDA	1280-1	503 (600-1)	1280-1½ 503 (600-1½)	NA
CIRCLING	1300-1	523 (600-1)	1320-1½ 543 (600-1½)	NA



NC-3, 11 MAR 2010 to 08 APR 2010

NC-3, 11 MAR 2010 to 08 APR 2010