

RNAV (GPS) RWY 35

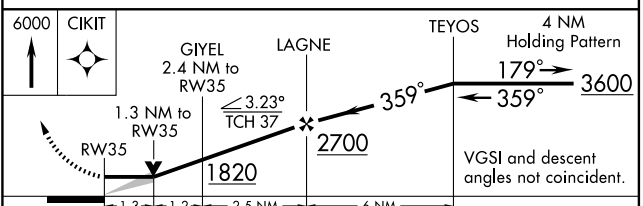
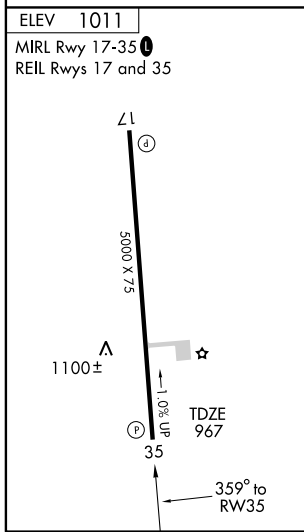
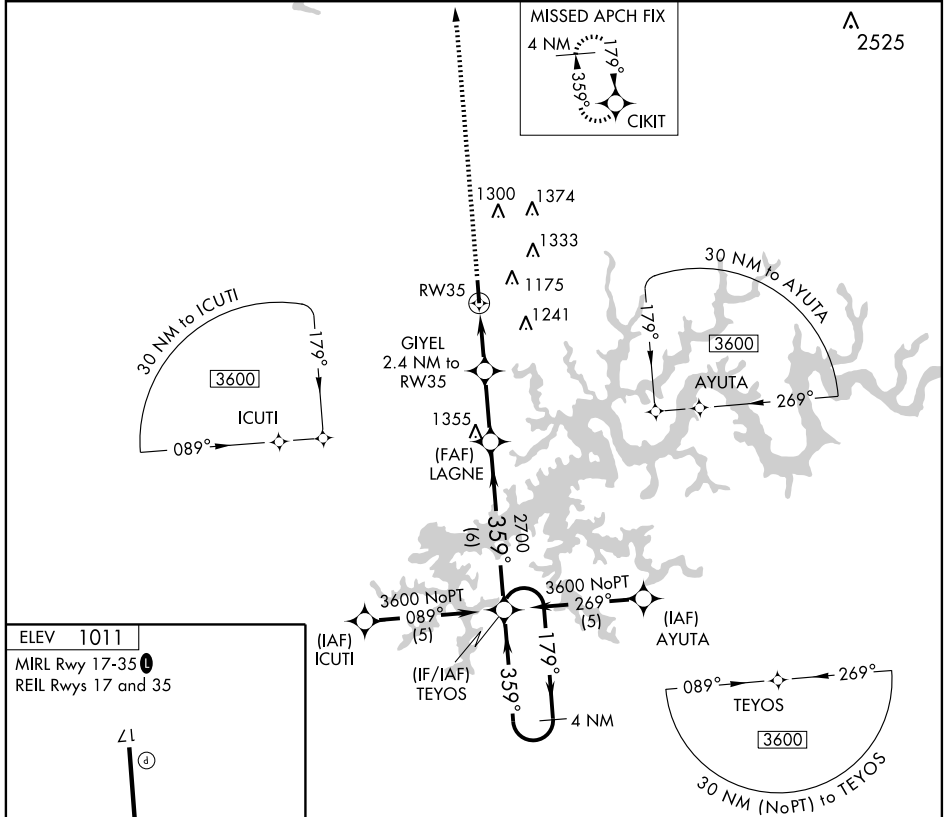
JAMESTOWN/ RUSSELL COUNTY (K24)

APP CRS	Rwy Idg	5000
359°	TDZE	967
	Apt Elev	1011

▽ If local altimeter setting not received, use Lake Cumberland Rgnl altimeter setting and increase all MDAs 160 feet. Procedure NA at night.
△ NA VDP NA with Lake Cumberland Rgnl altimeter setting.
 GPS or RNP-0.3 Required. DME/DME RNP-0.3 NA.

MISSED APPROACH: Climb to 6000 direct CIKIT WP and hold.

AWOS-3 119.6	INDIANAPOLIS CENTER 124.625 371.925	UNICOM 123.0 (CTAF)
------------------------	---	-------------------------------



CATEGORY	A	B	C	D
LNAV MDA	1400-1	433 (400-1)	NA	NA
CIRCLING	1540-1 529 (600-1)	1620-1 609 (700-1)	NA	NA

SE-1, 19 NOV 2009 to 17 DEC 2009

SE-1, 19 NOV 2009 to 17 DEC 2009