

RNAV (GPS) RWY 17

JAMESTOWN/ RUSSELL COUNTY (K24)

APP CRS	Rwy Idg	5000
179°	TDZE	1011
	Apt Elev	1011

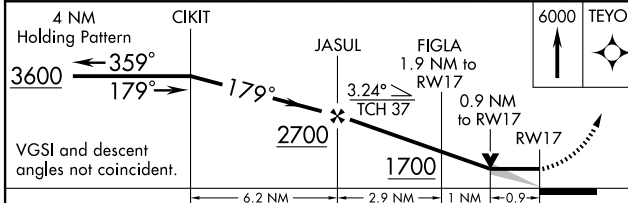
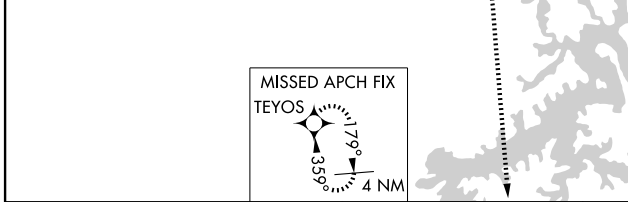
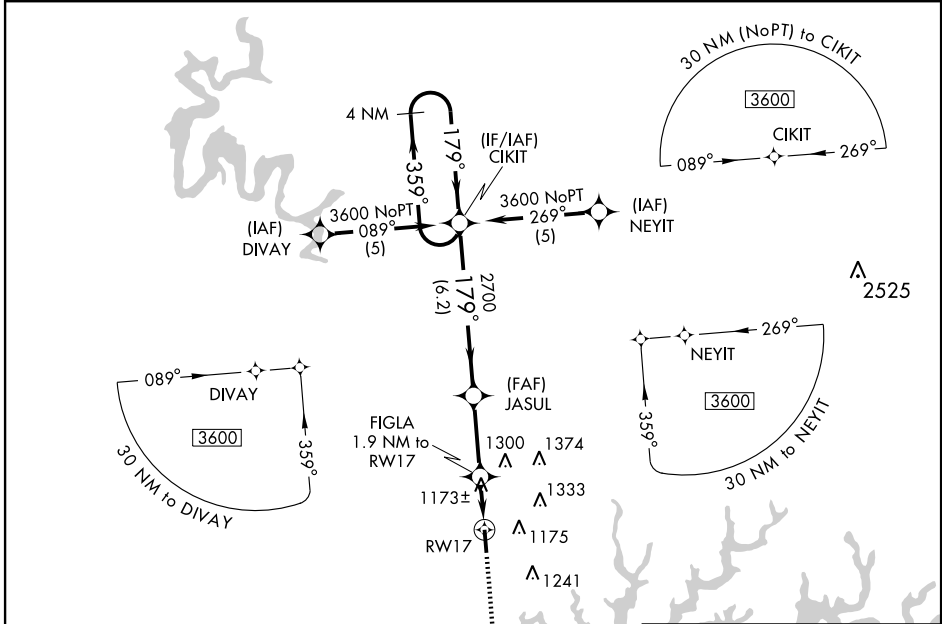
▽ If local altimeter setting not received, use Lake Cumberland Rgnl altimeter setting and increase all MDAs 160 feet. Procedure NA at night.
▲ NA VDP NA with Lake Cumberland Rgnl altimeter setting.
 GPS or RNP-0.3 Required. DME/DME RNP-0.3 NA.

MISSED APPROACH: Climb to 6000 direct TEYOS WP and hold.

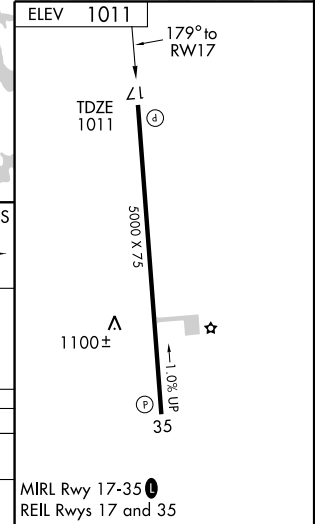
AWOS-3
119.6

INDIANAPOLIS CENTER
124.625 371.925

UNICOM
123.0 (CTAF)



CATEGORY	A	B	C	D
LNVA MDA	1440-1	429 (500-1)	NA	NA
CIRCLING	1540-1 529 (600-1)	1620-1 609 (700-1)	NA	NA



SE-1, 19 NOV 2009 to 17 DEC 2009

SE-1, 19 NOV 2009 to 17 DEC 2009