

GPS RWY 21

HARTFORD / OHIO COUNTY (7K4)

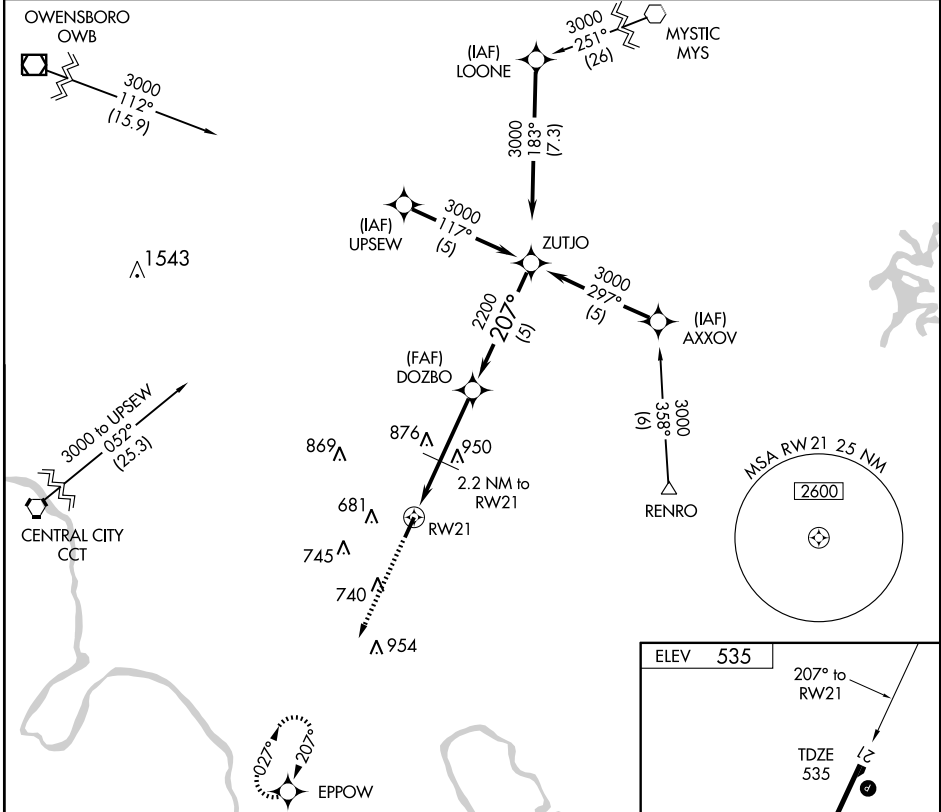
APP CRS 207°	Rwy Idg 4818
	TDZE 535
	Apt Elev 535

Obtain local altimeter setting on CTAF; if not received, use Bowling Green altimeter setting. VDP and descent angle/gradient not authorized with Bowling Green altimeter setting.
 NA

MISSED APPROACH: Climb to 3000 direct EPPOW WP and hold.

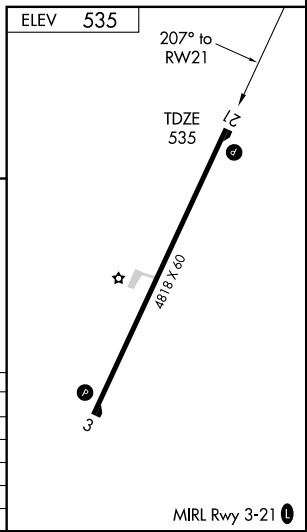
EVANSVILLE APP CON ★
126.4 226.4

UNICOM
122.8 (CTAF) 0



SE-1, 19 NOV 2009 to 17 DEC 2009

SE-1, 19 NOV 2009 to 17 DEC 2009



3000	EPPOW	DOZBO	ZUTJO
↑	★		
RW21		DOZBO	ZUTJO
1 NM to RW21		2.2 NM to RW21	3000
3.02°		2200	Procedure Turn NA
TCH 40		*1340 when using Bowling Green altimeter setting.	
1 NM		2.8 NM	
1.2 NM		5 NM	
CATEGORY	A	B	C
S-21	1060-1	525 (600-1)	NA
CIRCLING	1060-1	525 (600-1)	NA
BOWLING GREEN ALTIMETER SETTING MINIMUMS			
S-21	1160-1	625 (700-1)	NA
CIRCLING	1160-1	625 (700-1)	NA