

HARTFORD, KENTUCKY

AL-9266 (FAA)

VOR/DME-A

HARTFORD / OHIO COUNTY (7K4)

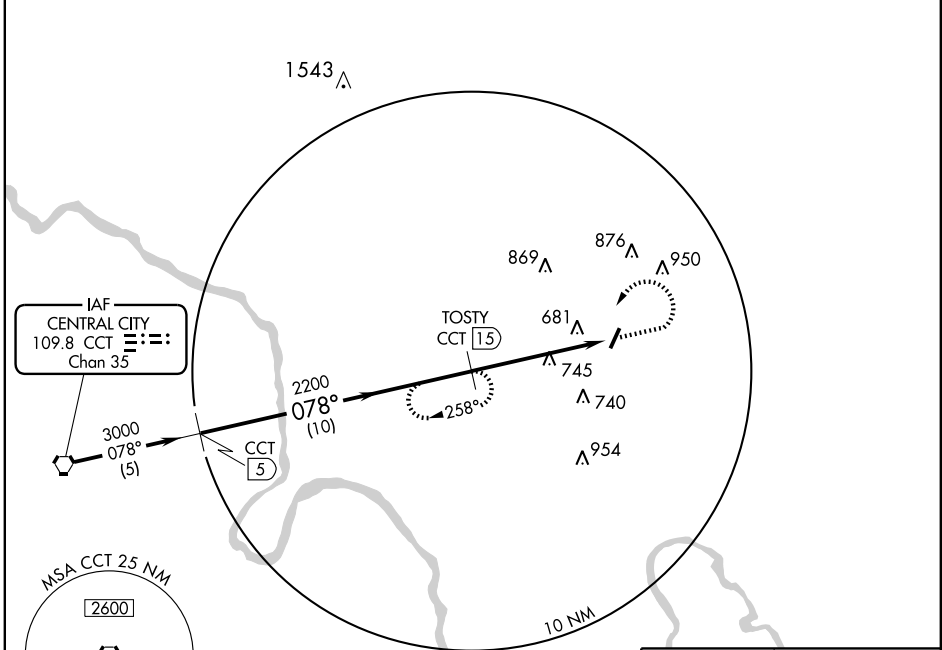
VORTAC CCT 109.8 Chan 35	APP CRS 078°	Rwy Idg TDZE Apt Elev N/A N/A 535
---------------------------------------	------------------------	---

▼ Obtain local altimeter setting on CTAF; if not received, use Bowling Green altimeter setting.
▲ NA

MISSED APPROACH: Climb to 1500 then climbing left turn to 3000 via heading 215° and CCT R-078 to TOSTY/15 DME and hold.

EVANSVILLE APP CON ★
126.4 226.4

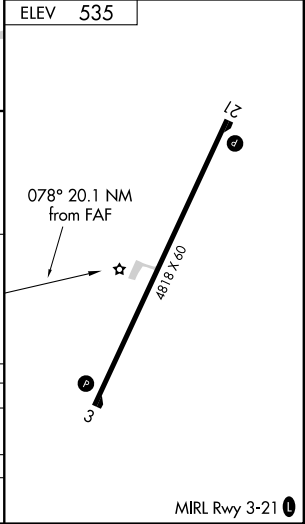
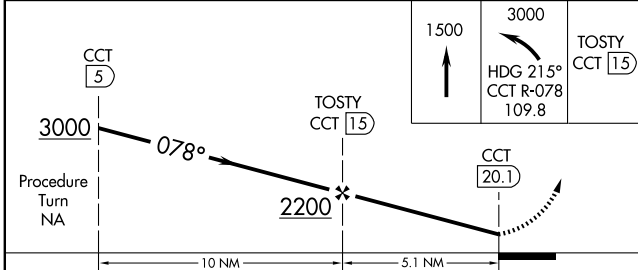
UNICOM
122.8 (CTAF) 0



SE-1, 11 MAR 2010 to 08 APR 2010

SE-1, 11 MAR 2010 to 08 APR 2010

ELEV 535



CATEGORY	A	B	C	D
CIRCLING	1060-1 525 (600-1)	1060-1¼ 525 (600-1¼)		NA
BOWLING GREEN ALTIMETER SETTING MINIMUMS				
CIRCLING	1140-1 605 (700-1)	1140-1¼ 605 (700-1¼)		NA

HARTFORD, KENTUCKY
Orig 09127

37°28'N - 86°51'W

HARTFORD / OHIO COUNTY (7K4)

VOR/DME-A

MIRL Rwy 3-21 0