

GPS RWY 21

HARTFORD / OHIO COUNTY (7K4)

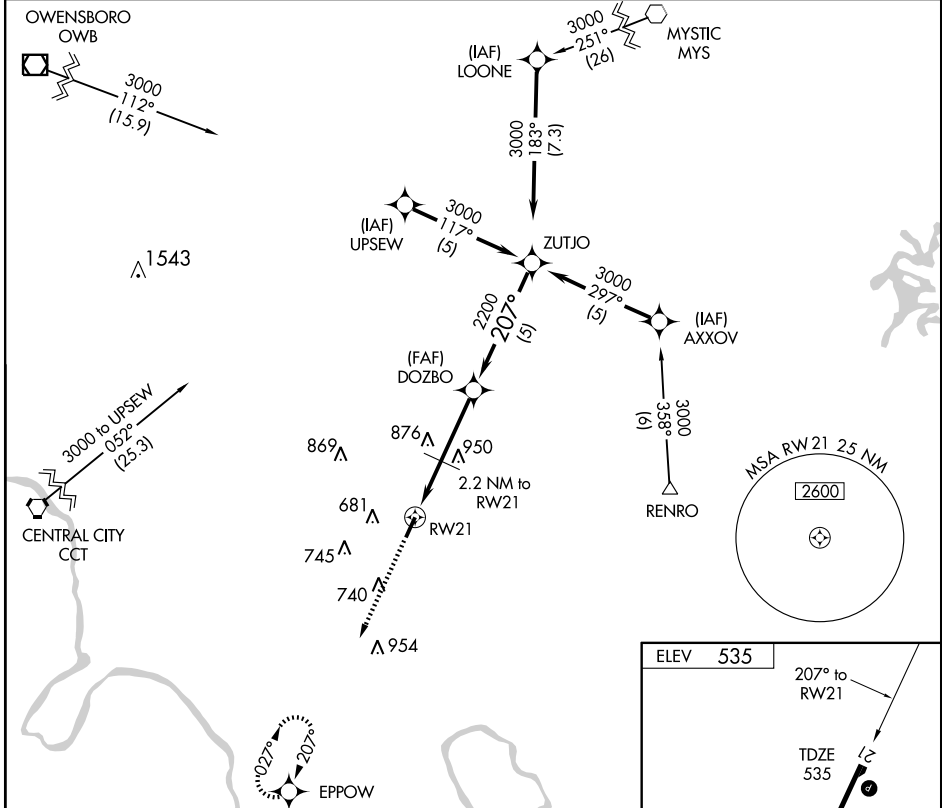
APP CRS	Rwy Idg	4818
207°	TDZE	535
	Apt Elev	535

Obtain local altimeter setting on CTAF; if not received, use Bowling Green altimeter setting. VDP and descent angle/gradient not authorized with Bowling Green altimeter setting.
 NA

MISSED APPROACH: Climb to 3000 direct EPPOW WP and hold.

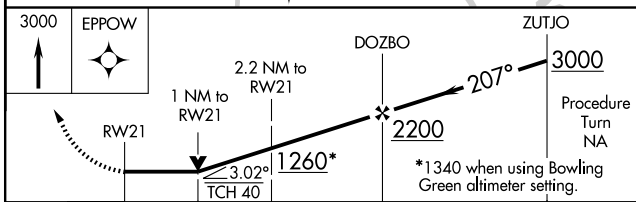
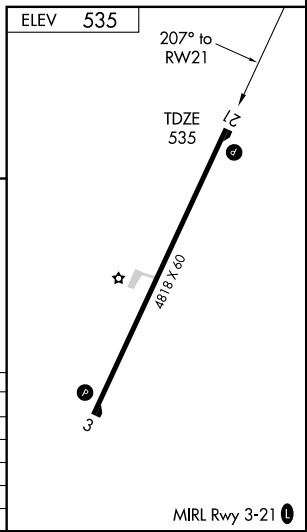
EVANSVILLE APP CON ★
126.4 226.4

UNICOM
122.8 (CTAF) 0



SE-1, 11 MAR 2010 to 08 APR 2010

SE-1, 11 MAR 2010 to 08 APR 2010



CATEGORY	A	B	C	D
S-21	1060-1	525 (600-1)		NA
CIRCLING	1060-1	525 (600-1)		NA
BOWLING GREEN ALTIMETER SETTING MINIMUMS				
S-21	1160-1	625 (700-1)		NA
CIRCLING	1160-1	625 (700-1)		NA

MIRL Rwy 3-21 0