



# GPS RWY 3

HARTFORD / OHIO COUNTY (7K4)

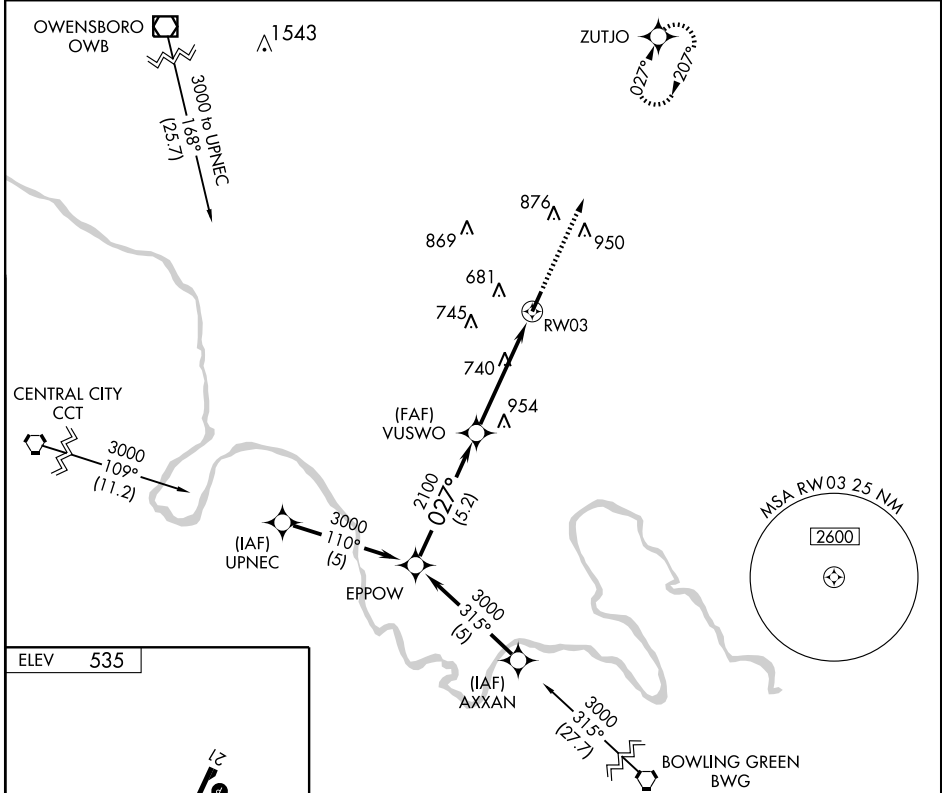
|             |          |             |
|-------------|----------|-------------|
| APP CRS     | Rwy Idg  | <b>4818</b> |
| <b>027°</b> | TDZE     | <b>530</b>  |
|             | Apt Elev | <b>535</b>  |

 Obtain local altimeter setting on CTAF; when not received, use Bowling Green altimeter setting. VDP and descent angle/gradient not authorized with Bowling Green altimeter setting.

 MISSED APPROACH: Climb to 3000 direct ZUTJO WP and hold.

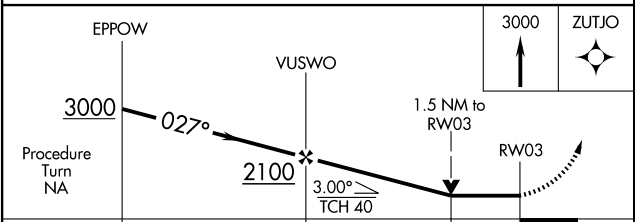
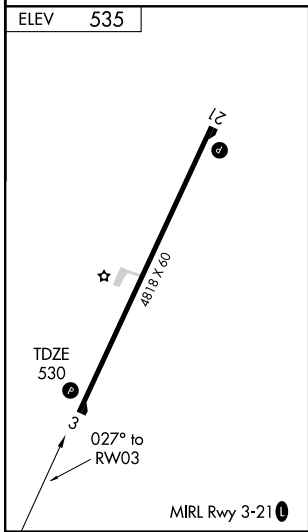
EVANSVILLE APP CON ★  
**126.4 226.4**

UNICOM  
**122.8 (CTAF) 0**



SE-1, 11 MAR 2010 to 08 APR 2010

SE-1, 11 MAR 2010 to 08 APR 2010



| CATEGORY                                 | A      | B           | C | D  |
|--|--------|-------------|---|----|
| S-3                                      | 1040-1 | 510 (600-1) |   | NA |
| CIRCLING                                 | 1040-1 | 505 (600-1) |   | NA |
| BOWLING GREEN ALTIMETER SETTING MINIMUMS |        |             |   |    |
| S-3                                      | 1140-1 | 610 (700-1) |   | NA |
| CIRCLING                                 | 1140-1 | 605 (700-1) |   | NA |

# GPS RWY 3