


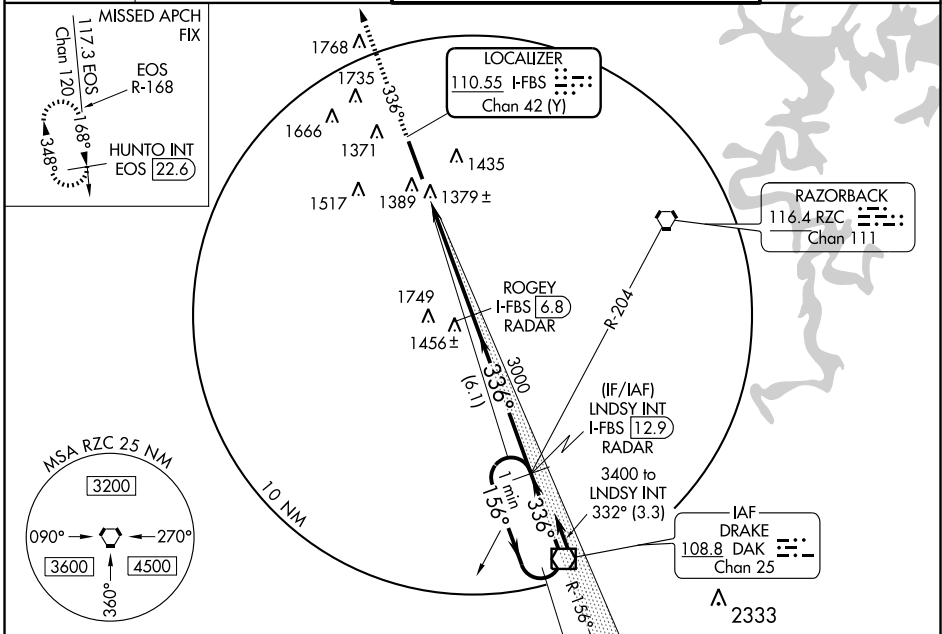
LOC/DME I-FBS 110.55 Chan 42 (Y)	APP CRS 336°	Rwy Idg TDZE Apt Elev	8800 1273 1287
--	------------------------	-----------------------------	---

ILS or LOC/DME RWY 34

FAYETTEVILLE/NORTHWEST ARKANSAS RGNL (X.N.A)

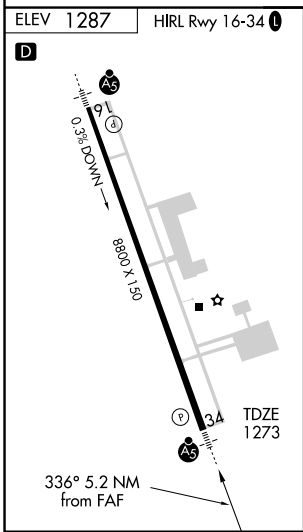
<p>▼ VDP NA when using Smith Field altimeter setting. *RVR 1800 authorized with the use of FD or AP or HUD to DA. ▲ When local altimeter setting not received, use Smith Field altimeter setting and increase all DA/MDA 40 feet, and increase S-LOC 34 Cat C visibility 1/4 mile.</p>	<p>MALSR </p>	<p>MISSED APPROACH: Climb to 3400 via heading 336° and EOS R-168 to HUNTO INT/EOS 22.6 DME and hold.</p>
--	--	---

ASOS 119.425	RAZORBACK APP CON * 121.0 244.57	NORTHWEST ARKANSAS RGNL TOWER * 127.1 (CTAF) 0	GND CON 121.9
------------------------	--	--	-------------------------



SC-1, 11 MAR 2010 to 08 APR 2010

SC-1, 11 MAR 2010 to 08 APR 2010



CATEGORY	DME REQUIRED			
	A	B	C	D
S-ILS 34	*1473/24 200 (200-1/2)			
S-LOC 34	1640/24 367 (400-1/2)			1640/40 367 (400-3/4)
CIRCLING	1720-1 433 (500-1)	1740-1 453 (500-1)	1740-1 1/2 453 (500-1 1/2)	1840-2 553 (600-2)

3400 Hdg 336° and EOS R-168 HUNTO INT EOS 22.6
 3000 ROGEY I-FBS 6.8 RADAR
 3000 LNSY I-FBS 12.9 RADAR
 One Minute Holding Pattern
 156° → 3400 ← 336°
 336°
 3000
 3000
 1 NM 4.2 NM 6.1 NM
 VGS1 and ILS glidepath not coincident. GS 3.00° TCH 55