

APP CRS	Rwy Idg	<b>4000</b>
<b>019°</b>	TDZE	<b>966</b>
	Apt Elev	<b>972</b>

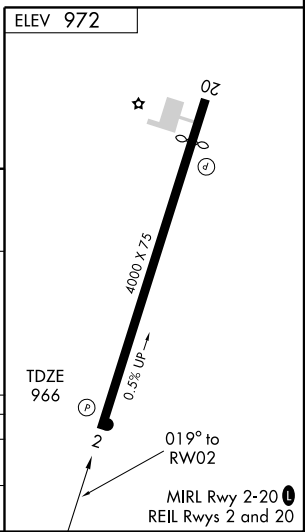
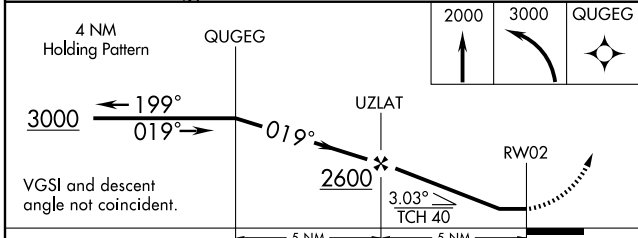
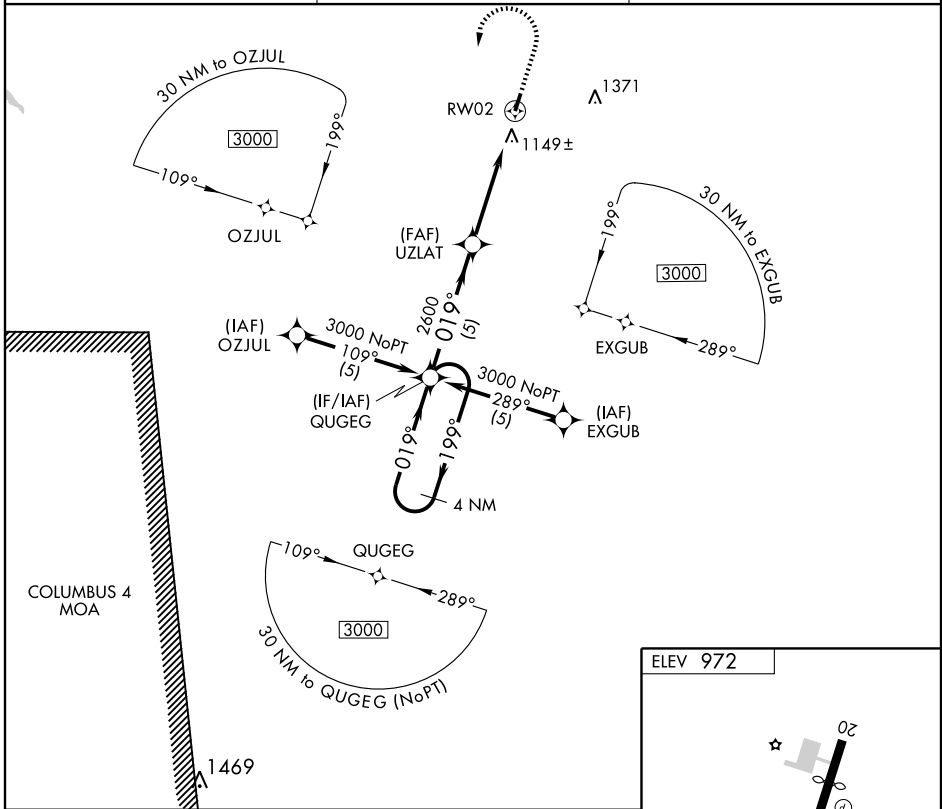
# RNAV (GPS) RWY 2

HOHENWALD/ JOHN A. BAKER FIELD (0M3)

**▲ NA** GPS or RNP-0.3 Required. DME/DME RNP-0.3 NA. Use Lawrenceburg-Lawrence County altimeter setting.

**MISSED APPROACH:** Climb to 2000 then climbing left turn to 3000 direct QUGEG WP and hold.

LAWRENCEBURG AWOS-3 <b>120.175</b>	MEMPHIS CENTER <b>125.85 379.25</b>	UNICOM <b>122.8 (CTAF) 0</b>
---------------------------------------	----------------------------------------	---------------------------------



CATEGORY	A	B	C	D
LNNAV	1480-1 514 (600-1)		1480-1½ 514 (600-1½)	NA
CIRCLING	1520-1 548 (600-1)		1520-1½ 548 (600-1½)	NA

SE-1, 11 MAR 2010 to 08 APR 2010

SE-1, 11 MAR 2010 to 08 APR 2010