

# RNAV (GPS) RWY 7

JONESVILLE / LEE COUNTY (ØVG)

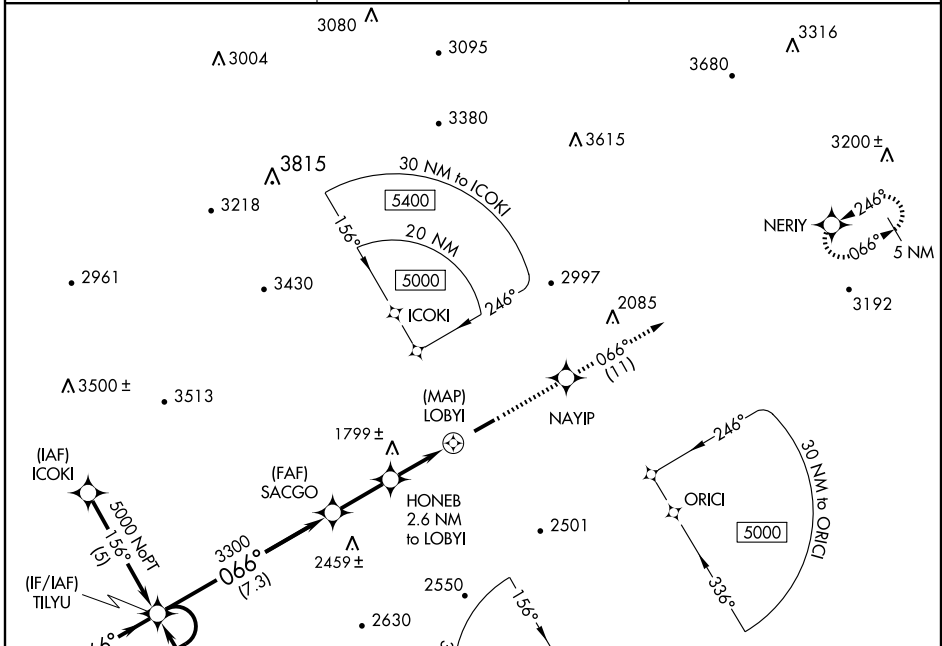
APP CRS	Rwy Idg	<b>5000</b>
<b>066°</b>	TDZE	<b>1403</b>
	Apt Elev	<b>1411</b>

**▽** Use Morristown, TN altimeter setting; if not received, use Middlesboro, KY altimeter setting and increase all MDAs 20 feet. DME/DME RNP-0.3 NA.

**▲ NA**

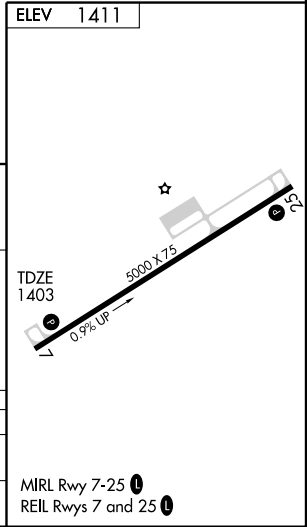
**MISSED APPROACH:** Climb to 5500 direct NAYIP and via 066° track to NERiy and hold, continue climb-in-hold to 5500.

MORRISTOWN AWOS-3 <b>126.725</b>	ATLANTA CENTER <b>127.85 371.85</b>	CTAF <b>122.9 0</b>
-------------------------------------	--	------------------------



NE-3, 11 MAR 2010 to 08 APR 2010

NE-3, 11 MAR 2010 to 08 APR 2010



5 NM Holding Pattern	TILYU	5500	NAYIP	NERiy
5000 ← 246°	→ 066°	↑	TRK 066°	
	SACGO	HONEB 2.6 NM to LOBYI	LOBYI	RW07
	3300	3.05° TCH 40	2520	
	7.3 NM	2.4 NM	2.6 NM	0.9

CATEGORY	A	B	C	D
LNAV MDA	2140-1	737 (800-1)	2140-2 737 (800-2)	2140-2 1/4 737 (800-2 1/4)
CIRCLING	2200-1 789 (800-1)	2200-1 1/4 789 (800-1 1/4)	2200-2 1/4 789 (800-2 1/4)	2280-2 3/4 869 (900-2 3/4)